

Categorical Exclusion
Appendix F
Water Resources



**Waters of the U.S. Determination
I-74 Access Control Project
Montgomery County, Indiana
Designation Number 2300695**

Prepared by: Leigh J. Fehlman, Clark Dietz, Inc.
Completed Date: November 15, 2024

I. Project Information

A field investigation was conducted on August 7, 2024, by Clark Dietz, Inc. to evaluate the presence of Waters of the United States for the proposed I-74 access control project, located along US 231 from approximately 0.09 mile north to 0.33 mile north of the I-74 westbound on/off ramps in Crawfordsville, Montgomery County, Indiana.

Date of Field Reconnaissance:

August 7, 2024

Location:

Along US 231 from approximately 0.09 mile north to 0.33 mile north of the I-74 westbound on/off ramps
Sections 17, 18, and 20, Township 19 North, Range 4 West
Crawfordsville U.S. Geological Survey (USGS) Quadrangle
Montgomery County, Indiana

North Terminus

Latitude: 40.086387° N
Longitude: -86.904043° W

South Terminus

Latitude: 40.08279° N
Longitude: -86.903610° W

12 Digit HUC:

Headwaters Black Creek, HUC 051201100601
Liberty Chapel-Black Creek HUC 051201100602

II. Project Description

The Indiana Department of Transportation (INDOT) proposes to proceed with an access control project in Crawfordsville, Montgomery County, Indiana. The project would install right-of-way fencing along the east and west sides of US 231. The maximum distance for the right-of-way fencing will be approximately 50 feet from the edge of pavement. Right-of-way fencing will be installed for a total length of approximately 540 feet north of the W CR 300 N and US 231 intersection (east of US 231) and 1,200 feet north of the W CR 300 N and US 231 intersection (west of US 231). The project would re-size the existing gravel driveway located east of the US 231 and W CR 300 N intersection. The width of the gravel driveway will be reduced by removing a portion of it and regrading the slope down to the ditch line. The existing drive pipe and ditch line will remain unchanged. The gravel driveway will remain accessible for utility operations following the completion of construction activities. The land parcel located east of US 231 would become landlocked between the INDOT right-of-way and the railroad. INDOT would acquire the entire parcel (approximately 16 acres). No work will take place on the purchased land parcel, as all activities will be confined to previously disturbed soils within the existing INDOT right-of-way. In preparation for this project, a wetland and waterway delineation was conducted at the investigated area. The general project vicinity is shown on page A1.

Land use within the investigated area is primarily roadway, mowed right-of-way, and unmaintained roadside ditches. Beyond the investigated area, land use is primarily agricultural and commercial properties. Aerial photography showing land in the immediate vicinity of the investigated area can be found on page A6.

III. Desktop Reconnaissance

Prior to Conducting field work, Clark Dietz, Inc. staff reviewed the USGS topographic mapping (page A2), U.S. Fish & Wildlife Service (USFWS) National Wetland Inventory (NWI) Map (page A3), Indiana Department of Natural Resources (IDNR) Best Available Flood Hazard Map (page A3), INDR Indiana Floodplain Information Portal (INFIP) data (page A4), USGS National Hydrography Dataset (NHD) (page A3), U.S. Department of Agriculture (USDA) and Natural Resource Conservation Service (NRCS) Web Soil Survey (page A5), and current aerial imagery (page A6). These resources were used to identify potential wetlands and waterways within the investigated area and establish historic conditions.

NWI, NHD, and Floodplain Information:

According to the USFWS NWI data, there is one NWI wetland that overlaps with the investigated area (page A3). This mapped wetland, labeled as riverine, intermittent, streambed, seasonally flooded (R4SBC), is located at the northern terminus of the investigated area. No work is anticipated to occur at the location of the mapped wetland.

The USGS NHD map shows two NHD lines within the investigated area, a canal/ditch and a connector (page A3). The canal/ditch runs parallel to northbound US 231 until it crosses and continues north along southbound US 231, extending the entire length of the investigated area. The connector is located at the northern terminus of the investigated area, crossing perpendicularly to US 231.

According to IDNR Best Available Flood Hazard data (page A3) and IDNR INFIP best available floodplain data (page A4), the investigated area is not located within any IDNR floodways or floodplains. The nearest floodway is located approximately 0.30 mile northwest of the investigated area and is associated with Black Creek.

Soils:

According to the NRCS Soil Survey Geographic (SSURGO) Database for Montgomery County, Indiana, the investigated area contains four soil types. Table 1 summarizes the soil types, flooding frequency, drainage class, hydric soil category, and hydric soil rating. Please refer to page A5 for the NRCS Soil Survey Map.

Table 1. NRCS SSURGO Mapped Soils

Soil Name	Map Abbreviation	NRCS Flooding Frequency	NRCS Drainage Class	NRCS Hydric Soil Category	SSURGO Hydric Soil Rating (%)
Mahalasville silty clay loam, gravelly substratum	Mc	None	Poorly drained	Hydric	100
Pits, gravel	Po	None	Well drained	Not Hydric	0
Rush variant silt loam, 0 to 2 percent slopes	RwA	None	Moderately well drained	Not Hydric	0
Waynetown silt loam, 0 to 2 percent slopes	WdA	None	Somewhat poorly drained	Hydric	3

Attachments:

General Location Map.....	A1
Topographic Map..... Removed to avoid duplication - See Appendix B	A2
NWI, IDNR Floodplain, & NHD Map.....	A3
INDR INFIP.....	A4
NRCS Soil Map.....	A5
Aerial Imagery Map.....	A6
Feature & Photo Maps.....	A7 – A9
Site Photographs.....	A10 – A32
Wetland Determination Data Forms.....	A33 – A54
Pre-JD Form.....	A55 – A56

IV. Field Reconnaissance

Onsite data collection was conducted on August 7, 2024, by Cameron Fraser and Leigh Fehlman. Local precipitation data was reviewed to provide context for observations of hydrology. Precipitation data on the Community Collaborative Rain, Hail, and Snow Network website (cocorahs.org) showed the area received approximately 1.27 inches of precipitation in the 2 weeks preceding the August 2024 site visit. The most significant rain event occurred July 25, 2024, resulting in approximately 0.42 inch of precipitation. Field data collection and methods were based on the technical criteria presented in the 1987 U.S. Army Corps of Engineers Wetland Delineation Manual and 2010 Regional Supplement to the Corps of Engineers Wetland Delineation Manual: Midwest Region Version 2.0.

Streams:

There are no stream features located in the investigated area.

Roadside Ditches:

Three roadside ditches were identified within the investigated area.

Roadside ditch 1 (RSD1) runs parallel to northbound US 231, south of the subject drive, for approximately 62 feet. Wetland A is located within RSD1. The portion of RSD1 within the investigated area appears to only carry ephemeral flow and is entirely vegetated. The dominant vegetation within RSD1 includes sandbar willow (*Salix interior* – FACW) and white cutgrass (*Leersia virginica* – FACW).

RSD2 runs parallel to northbound US 231, north of the subject drive, for approximately 720 feet. Wetland B and C are located within RSD2. RSD2 is located entirely within the investigated area. It appears RSD2 only carries ephemeral flow and is mostly vegetated. The dominant vegetation within RSD2 includes cattail (*Typha X glauca* – OBL) and giant ragweed (*Ambrosia trifida* – FAC).

RSD3 runs parallel to southbound US 231, north of W CR 300 N, for approximately 1152 feet. Wetland D is located within RSD3. Most of RSD3 appears to only carry ephemeral flow; however, where Wetland D lies within RSD3, there appears to be concentrated, intermittent flow. No ordinary high water mark (OHWM) was identified within RSD3, and there is no continuous surface connection to a Water of the United States. The portion of RSD3 within the investigated area is mostly vegetated. The dominant vegetation within RSD3 includes sandbar willow (*Salix interior* – FACW) and red fescue (*Festuca rubra* – FAC).

The roadside ditches, all located within a mapped canal/ditch NHD line, do not carry relatively permanent, standing, or continuously flowing water and lack a continuous surface connection to a Water of the United States. None of the roadside ditches exhibited an OHWM. As such, none of the roadside ditches are likely to be jurisdictional Waters of the United States by the USACE.

All roadside ditches are shown on the Feature and Photo Maps (pages A7 through A9) and can be seen within the photo documentation attached.

Wetlands:

Five potential wetland areas were investigated during the site visit. Data points (DPs) were collected to determine the presence or absence of wetland conditions.

Wetland A

Wetland A is located east of US 231 and south of the subject drive in RSD1 (page A8). Wetland A is approximately 0.005 acre in size and continues south outside of the investigated area. Wetland A is a palustrine scrub-shrub wetland using the Cowardin Classification System. Wetland A appears to be a non-exempt, isolated wetland; therefore, it is a Waters of the State by the USACE. It is anticipated this wetland will be classified as a Class 1 isolated wetland due to heavy disturbance and proximity to US 231.

DP1 was collected to represent Wetland A. Vegetation at DP1 was dominated by white cutgrass (*Leersia virginica* – FACW) and sandbar willow (*Salix interior* – FACW). Three hydrophytic vegetation indicators were met – Rapid Test, Dominance Test, and Prevalence Index. Therefore, hydrophytic vegetation was present. The Redox Dark Surface (F6) hydric soil indicator was met; therefore, hydric soil was present. One primary hydrology indicator, saturation (A3) and two secondary indicators, geomorphic position (D2) and FAC-neutral test (D5), were met. Saturation was present at a depth of 12 inches and the water table at 20 inches

below ground surface. Therefore, wetland hydrology was present. DP1 meets all three wetland criteria and is representative of conditions within Wetland A.

DP2 was collected to verify upland conditions surrounding Wetland A. DP2 did not meet hydrophytic vegetation, hydric soil, or wetland hydrology criteria. With none of the criteria met, DP2 is not located within a wetland and is characteristic of the upland area surrounding Wetland A.

The boundary of Wetland A was defined by a change in elevation and plant community. The wetland data forms for DP1 and DP2 can be found on pages A33 through A36, and photos are included on pages A11 and A12.

Wetland B

Wetland B is located east of US 231 and north of the subject drive in RSD2 (pages A8 and A9). Wetland B is approximately 0.043 acre in size and is located entirely within the investigated area. Wetland B is a palustrine scrub-shrub wetland using the Cowardin Classification System. Wetland B appears to be a non-exempt, isolated wetland; therefore, it is a Waters of the State by the USACE. It is anticipated this wetland will be classified as a Class 1 isolated wetland due to heavy disturbance and proximity to US 231.

DP3 was collected to represent Wetland B. Vegetation at DP3 was dominated by cattail (*Typha X glauca* – OBL). Three hydrophytic vegetation indicators were met – Rapid Test, Dominance Test, and Prevalence Index. Therefore, hydrophytic vegetation was present. The Redox Dark Surface (F6) hydric soil indicator was met; therefore, hydric soil was present. One primary hydrology indicator, saturation (A3) and three secondary indicators – crayfish burrows (C8), geomorphic position (D2), and FAC-neutral test (D5) – were met. Saturation was present at a depth of 12 inches and the water table at 20 inches below ground surface. Therefore, wetland hydrology was present. DP3 meets all three wetland criteria and is representative of conditions within Wetland B.

DP4 was collected to verify upland conditions surrounding Wetland B. DP4 did not meet hydrophytic vegetation, hydric soil, or wetland hydrology criteria. With none of the criteria met, DP4 is not located within a wetland and is characteristic of the upland area surrounding Wetland B.

The boundary of Wetland B was defined by a change in elevation and plant community. The wetland data forms for DP3 and DP4 can be found on pages A37 through A40 and photos are included on pages A14 and A15.

Wetland C

Wetland C is located east of US 231 and north of Wetland B in RSD2 (page A9). Wetland C is approximately 0.002 acre in size and exists entirely within the investigated area. Wetland C is a palustrine emergent wetland using the Cowardin Classification System. Wetland C appears to be a non-exempt, isolated wetland; therefore, it is a Waters of the State by the USACE. It is anticipated this wetland will be classified as a Class 1 isolated wetland due to heavy disturbance and proximity to US 231.

DP6 was collected to represent Wetland C. Vegetation at DP6 was dominated by Frank's sedge (*Carex frankii* – OBL). Three hydrophytic vegetation indicators were met – Rapid Test, Dominance Test, and Prevalence Index. Therefore, hydrophytic vegetation was present. The Redox Dark Surface (F6) hydric soil indicator was met; therefore, hydric soil was present. Three secondary hydrology indicators were met – crayfish burrows (C8), geomorphic position (D2), and FAC-neutral test (D5). Therefore, wetland hydrology was present. DP6 meets all three wetland criteria and is representative of conditions within Wetland C.

DP5 was collected to verify upland conditions surrounding Wetland C and that Wetland C was separate from Wetland B. DP5 did not meet hydrophytic vegetation or hydric soil. Although the secondary hydrology indicator geomorphic position (D2) was met, this was not enough to indicate the presence of wetland hydrology. With none of the criteria met, DP5 is not located within a wetland and is characteristic of the upland area surrounding Wetland C.

The boundary of Wetland C was defined by a change in elevation and plant community. The wetland data forms for DP5 and DP6 can be found on pages A41 through A44 and photos are included on pages A15 through A17.

Wetland D

Wetland D is located west of US 231 near the northern terminus of the investigated area in RSD3 (page A9). Wetland D is approximately 0.044 acre in size and extends north outside of the investigated area. Wetland D is a palustrine scrub-shrub wetland using the Cowardin Classification System. Wetland D appears to be a non-exempt, isolated wetland; therefore, it is a Waters of the State by the USACE. It is anticipated this wetland will be classified as a Class 1 isolated wetland due to heavy disturbance and proximity to US 231.

DP7 was collected to represent Wetland D. Vegetation at DP7 was dominated by reed canary grass (*Phalaris arundinacea* – FACW). Three hydrophytic vegetation indicators were met – Rapid Test, Dominance Test, and Prevalence Index. Therefore, hydrophytic vegetation was present. The Redox Dark Surface (F6) and 2cm Muck (A10) hydric soil indicators were met; therefore, hydric soil was present. Three primary hydrology indicators – high water table (A2), saturation (A3), and true aquatic plants (B14) – and four secondary indicators – crayfish burrows (C8), saturation visible on aerial imagery (C9), geomorphic position (D2), and FAC-neutral test (D5) – were met. Saturation was present at the surface and the water table at 5 inches below ground surface. Therefore, wetland hydrology was present. DP7 meets all three wetland criteria and is representative of conditions within Wetland D.

DP8 was collected to verify upland conditions surrounding Wetland D. DP8 did not meet hydrophytic vegetation, hydric soil, or wetland hydrology criteria. With none of the criteria met, DP8 is not located within a wetland and is characteristic of the upland area surrounding Wetland D.

DP9 was collected to verify the boundary of Wetland D and show upland conditions surrounding the wetland. DP9 did not meet hydrophytic vegetation or hydric soil. Although the secondary hydrology indicator geomorphic position (D2) was met, this was not enough to indicate the presence of wetland hydrology. With none of the criteria met, DP9 is not located within a wetland and is characteristic of the upland area surrounding Wetland D.

The boundary of Wetland D was defined by a change in elevation and plant community. The wetland data forms for DP7, DP8, and DP9 can be found on pages A45 through A50 and photos are included on pages A19 through A21 and A25.

Wetland E

Wetland E is located west of US 231 and north of W CR 300 N in RSD3 (page A8). Wetland E is approximately 0.001 acre in size and exists entirely within the investigated area. Wetland E is a palustrine emergent wetland using the Cowardin Classification System. Wetland E appears to be a non-exempt, isolated wetland; therefore, it is a Waters of the State by the USACE. It is anticipated this wetland will be classified as a Class 1 isolated wetland due to heavy disturbance and proximity to US 231.

DP10 was collected to represent Wetland E. Vegetation at DP10 was dominated by rough barnyard grass (*Echinochloa muricata*–OBL), red fescue (*Festuca rubra* – FACU), and Kentucky bluegrass (*Poa pratensis* – FAC). Two hydrophytic vegetation indicators were met, Dominance Test and Prevalence Index. Therefore, hydrophytic vegetation was present. The 2cm Muck (A10) hydric soil indicator was met; therefore, hydric soil was present. One primary hydrology indicator, saturation (A3), and one secondary hydrology indicator, crayfish burrows (C8), were met. Therefore, wetland hydrology was present. DP10 meets all three wetland criteria and is representative of conditions within Wetland E.

DP11 was collected to verify upland conditions surrounding Wetland E. DP11 did not meet hydrophytic vegetation or wetland hydrology criteria. The depleted matrix hydric soil indicator was met and, therefore, the hydric soil criterion was met. With only one of three wetland criteria met, DP11 is not located within a wetland and is characteristic of the upland area surrounding Wetland E.

The boundary of Wetland E was defined by a change in plant community. The wetland data forms for DP10 and DP11 can be found on pages A51 through A54 and photos are included on pages A30 and A31.

Table 2, included below, summarizes wetlands A through E and DPs 1 through 11. Photos can be found on pages A10 through A32.

Table 2. Wetland Summary Table

Wetland ID	Type	Acreage	Quality	Photo IDs	Associated structure ID	Likely WOTUS?	Data Point ID (DP)	Lat/Long	Dominant Vegetation	Hydric Soil Indicator(s)	Hydrology Indicator(s)	Within Wetland?	Notes
Wetland A	SS	0.005	poor	1, 3-11	N/A	No	DP1	40.082776, -86.90363	<i>Salix interior, Leersia virginica</i>	F6	A3, D2, D5	yes*	Wetland A extends south outside the investigated area and is part of roadside drainage.
							DP2	40.082776, -86.903642	<i>Ambrosia trifida, Plantago lanceolata</i>	N/A	N/A	No	
Wetland B	SS	0.043	poor	13, 14, 16-23	N/A	No	DP3	40.083709, -86.903662	<i>Typha X glauca</i>	F6	A3, C8, D2, D5	yes*	Wetland B fully contained in investigated area and is part of roadside drainage.
							DP4	40.08371, -86.903645	<i>Festuca rubra</i>	N/A	N/A	No	
Wetland C	EM	0.002	poor	24 - 31	N/A	No	DP5	40.084617, -86.903717	<i>Ambrosia trifida, Cirsium arvense</i>	N/A	D2	No	
							DP6	40.084698, -86.903715	<i>Carex frankii</i>	F6	C8, D2, D5	yes*	Wetland C fully contained in investigated area and is part of roadside drainage.
Wetland D	SS	0.044	poor	38-52, 55, 61-63	CV 231-054-181.26	No	DP7	40.086227, -86.904267	<i>Phalaris arundinacea</i>	A10, F6	A2, A3, B14, C8, C9, D2, D5	yes*	Wetland D extends north outside the investigated area and is part of roadside drainage.
							DP8	40.086227, -86.904228	<i>Cornus racemosa, Lonicera maackii, Poa pratensis, Festuca rubra</i>	N/A	N/A	No	
							DP9	40.085546, -86.904254	<i>Juniperus virginiana, Salix interior, Lonicera maackii, Festuca rubra</i>	N/A	D2	No	
Wetland E	EM	0.001	poor	81 - 89	N/A	No	DP10	40.083181, -86.90414	<i>Echinochloa muricata, Festuca rubra, Poa pratensis</i>	A10	A3, C8	yes*	Wetland E fully contained in investigated area.
							DP11	40.083178, -86.904132	<i>Festuca rubra</i>	F3	N/A	No	

*INDOT acknowledges that the wetland would likely not meet the definition of a Waters of the US. However, INDOT is requesting that the USACE take jurisdiction of the wetland.

Open Water Features:

There are no open water features located in the investigated area.

Wildlife Evidence and Concerns:

Various sections of the investigated area, particularly the wetlands, offer habitat for wildlife. However, no evidence of wildlife was identified. Additionally, no evidence of bats or birds was found within the investigated area.

V. Conclusions

A field investigation was conducted on August 7, 2024, by Clark Dietz, Inc. to evaluate the presence of Waters of the United States for the I-74 access control project. A meander survey of the investigated area found three roadside ditches and five wetlands.

The roadside ditches (RSD1 through RSD3), all located within a mapped canal/ditch NHD line, do not carry relatively permanent, standing or continuously flowing water and lack a continuous surface connection to a Water of the United States. None of the roadside ditches exhibited an OHWM. As such, none of the roadside ditches are likely to be jurisdictional Waters of the United States by the USACE.

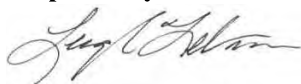
Wetlands A through E are anticipated to be isolated wetlands according to the USACE and, therefore, are Waters of the State. It is anticipated that all the wetlands identified will be classified as Class 1 isolated wetlands.

The final determination of jurisdictional waters is ultimately made by the USACE. This report is our best judgement based on the guidelines set forth by the USACE.

VI. Acknowledgement

This waters determination has been prepared based on the best available information, interpreted in light of the investigator's training, experience and professional judgement in conformance with the *1987 Corps of Engineers Wetlands Delineation Manual*, the appropriate regional supplement, the USACE *Jurisdictional Determination Form Instructional Guidebook*, and other appropriate agency guidelines.

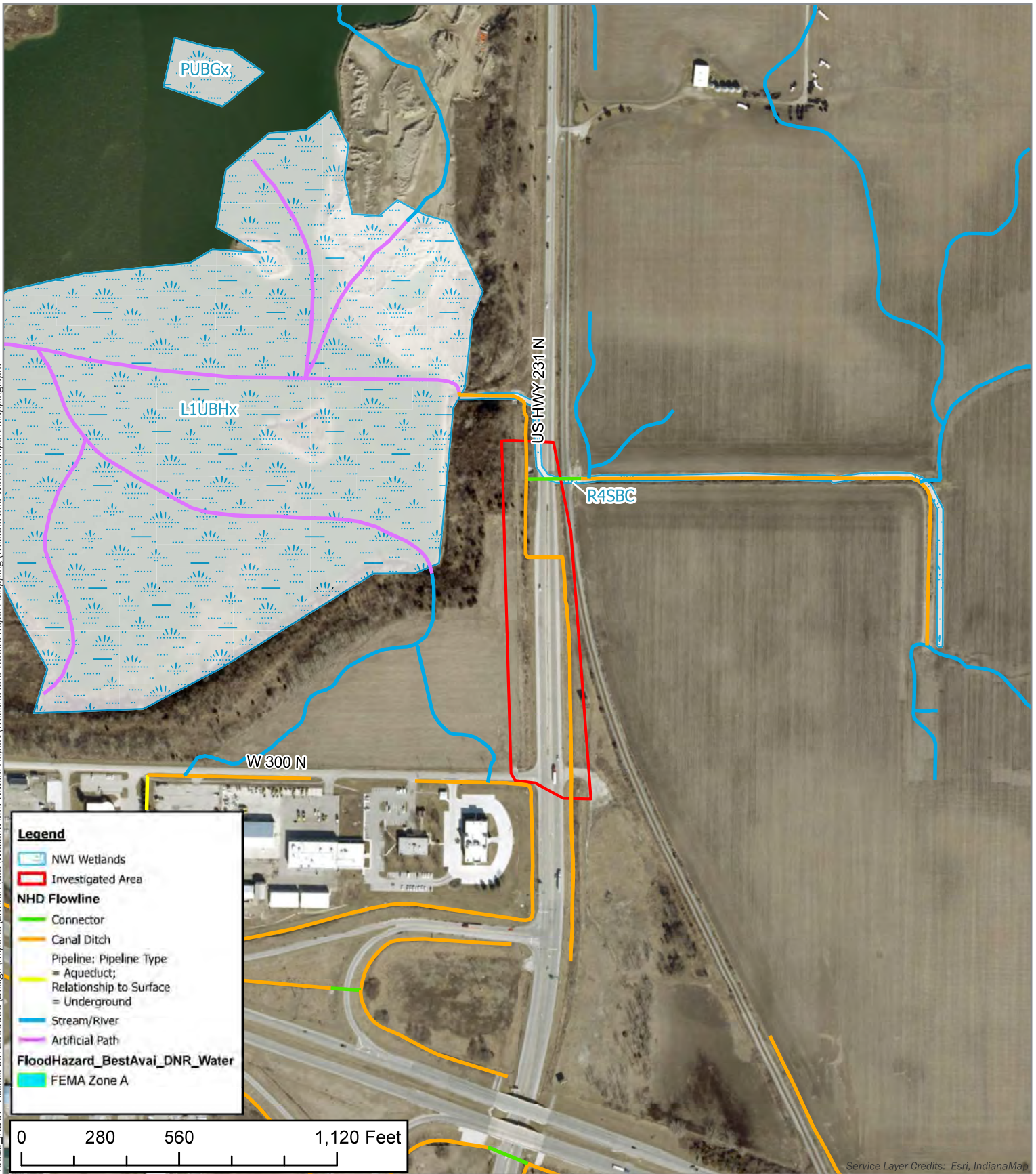
Prepared By:



11/15/2024

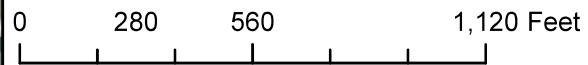
Leigh J. Fehlman
Ecologist / NEPA Specialist
Clark Dietz | Environmental

Date: 10/30/2024 File Path: P:\0740010_INDOT - Access Ctrl\2300695_Design\Reports\GIS\Wetland and Waters Report Mapping\Wetland and Waters Report Mapping.aprx



Legend

- NWI Wetlands
- Investigated Area
- NHD Flowline**
- Connector
- Canal Ditch
- Pipeline: Pipeline Type
- = Aqueduct;
- Relationship to Surface
- = Underground
- Stream/River
- Artificial Path
- FloodHazard_BestAvai_DNR_Water**
- FEMA Zone A



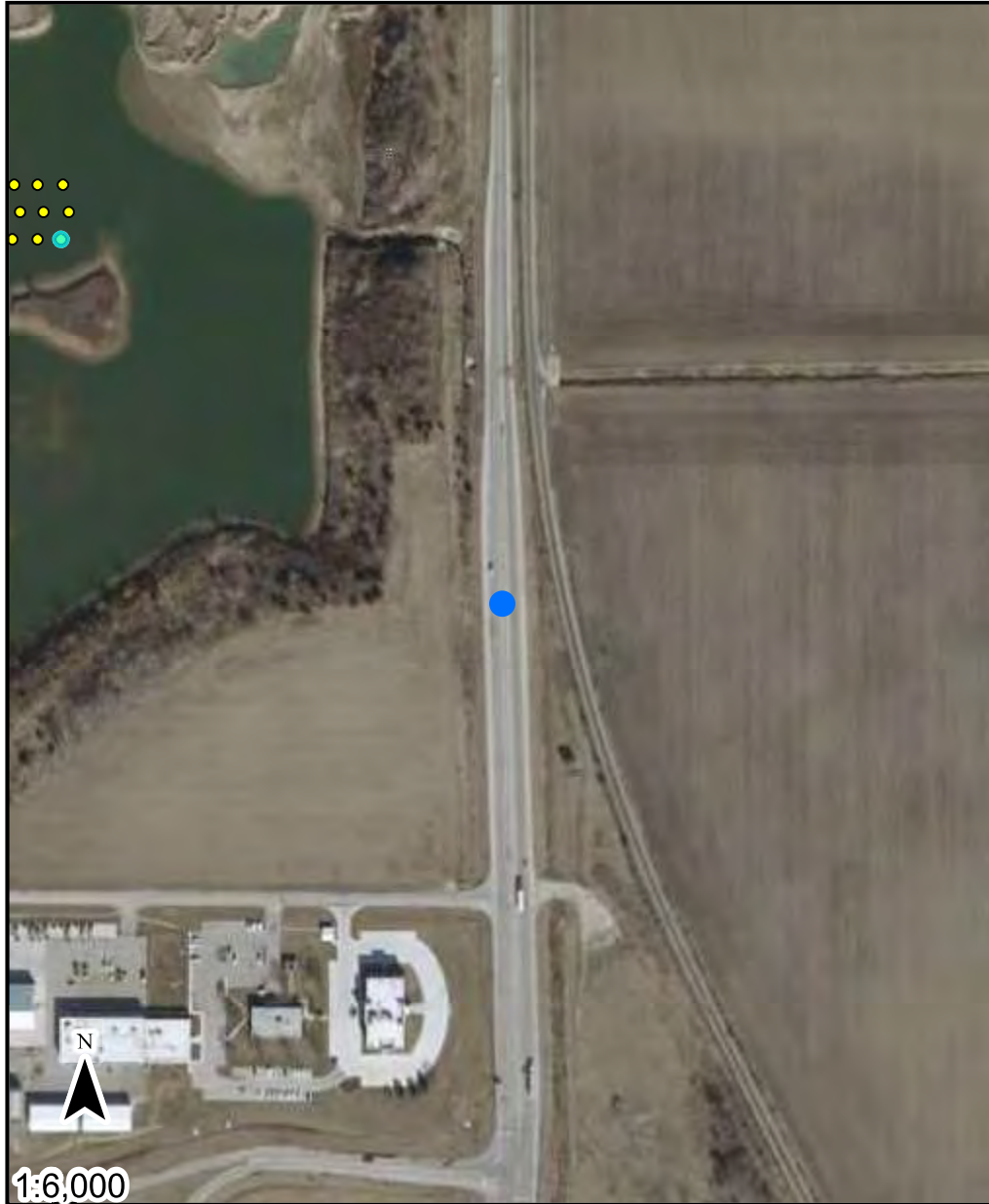
Wetland, Floodplain, & Flowline Map



I-74 at US 231 Access Control Project
 Montgomery County, Indiana
 Des. Number 2300695



Spatial Reference: NAD 1983 HARN StatePlane Indiana East FIPS 1301 Feet This map is for informational purposes and may not be suitable for legal, engineering, or surveying purposes.



- Point of Interest
- Base Flood Elevation Point
- POI
- 2.0
- Not Mapped

Long: -86.90398759561428

Lat: 40.08461913689189

The information provided below is based on the point of interest shown in the map above.

County: **Montgomery**

Approximate Ground Elevation: **753.1 feet (NAVD88)**

Stream Name:
Not Available

Base Flood Elevation: **Not Available**

Drainage Area: **1.06 SqMi**

Best Available Flood Hazard Zone: **Not Mapped**

National Flood Hazard Zone: **Not Mapped**

Is a Flood Control Act permit from the DNR needed for this location? **See following pages**

Is a local floodplain permit needed for this location? **Contact your local Floodplain Administrator-**

Floodplain Administrator: **Marc Bonwell, Building Administrator**

Community Jurisdiction: **Montgomery County, County proper**

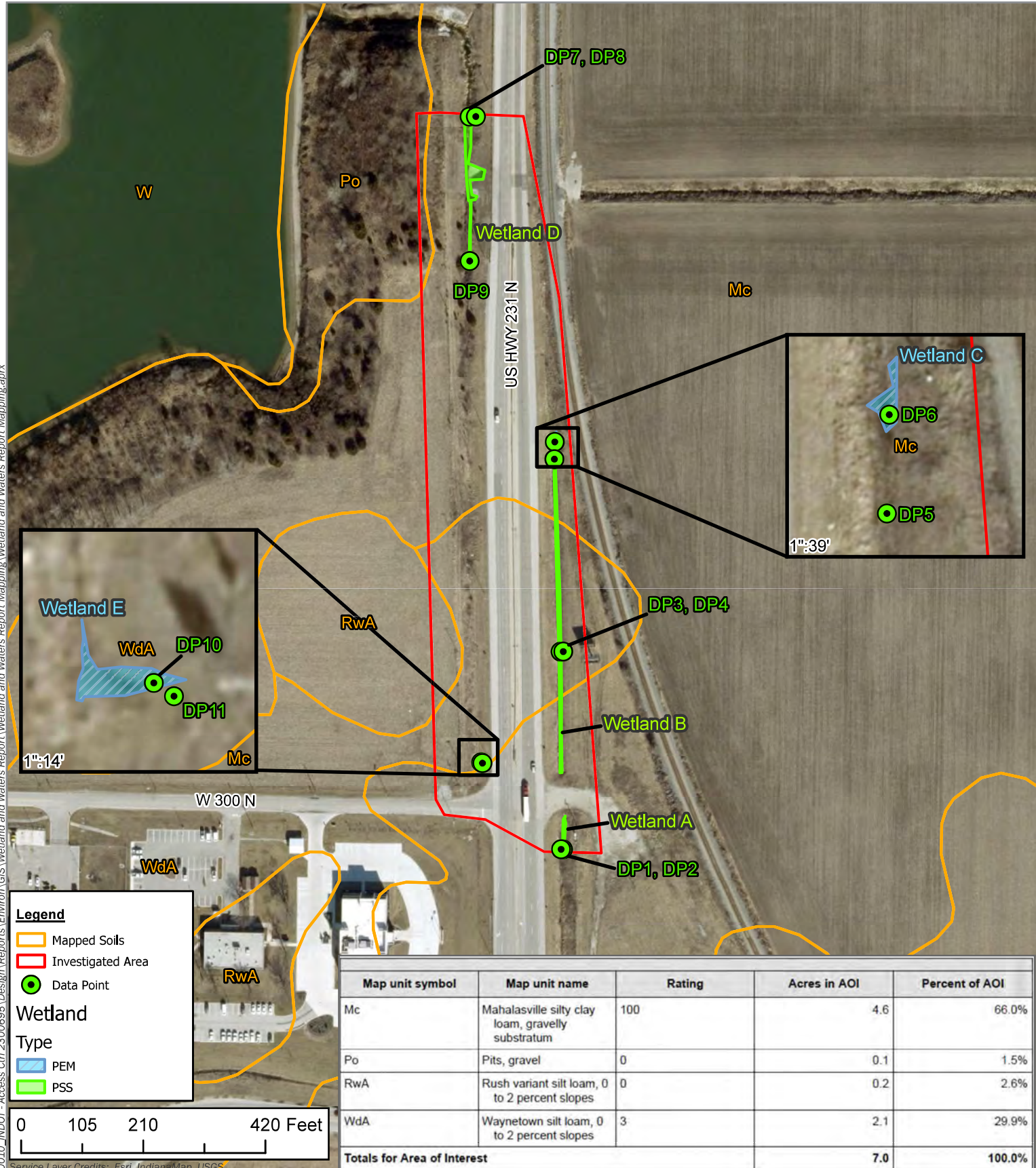
Phone: **(765) 364-6490**

Email: **marc.bonwell@montgomerycounty.in.gov**

US Army Corps of Engineers District: **Louisville**

Date Generated: 9/14/2024

Date: 10/31/2024 File Path: P:\1074\0010_INDOT - Access Ctrl 2300695\Design\Reports\GIS\Wetland and Waters Report Mapping\Wetland and Waters Report Mapping.aprx



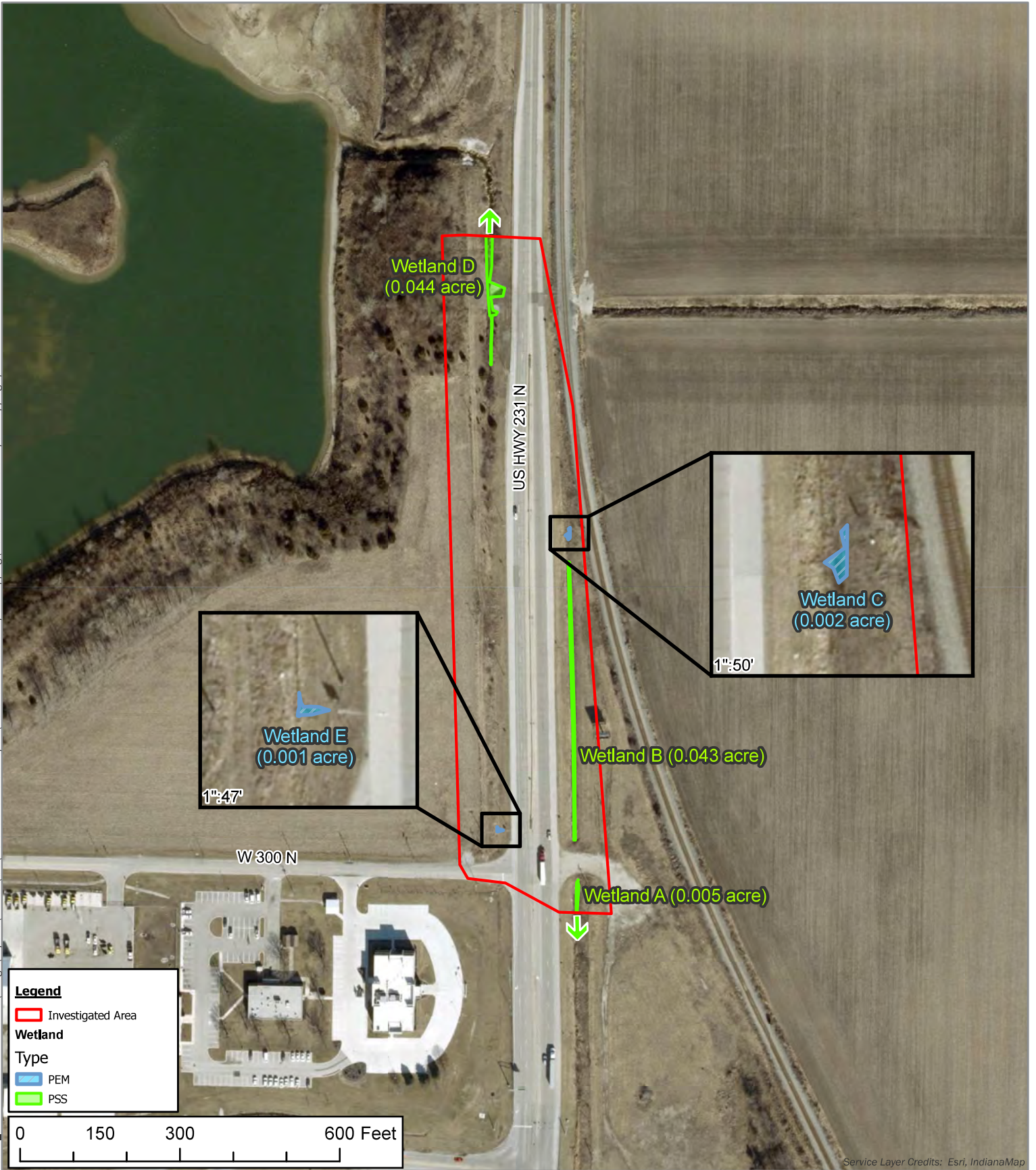
Map unit symbol	Map unit name	Rating	Acres in AOI	Percent of AOI
Mc	Mahalasville silty clay loam, gravelly substratum	100	4.6	66.0%
Po	Pits, gravel	0	0.1	1.5%
RwA	Rush variant silt loam, 0 to 2 percent slopes	0	0.2	2.6%
WdA	Waynetown silt loam, 0 to 2 percent slopes	3	2.1	29.9%
Totals for Area of Interest			7.0	100.0%

Montgomery County Soil Survey

I-74 at US 231 Access Control Project
 Montgomery County, Indiana
 Des. Number 2300695



Date: 10/31/2024 File Path: P:\10740010_INDOT - Access Ctrl\2300695\Design\Reports\GIS\Wetland and Waters Report Mapping\Wetland and Waters Report Mapping.aprx



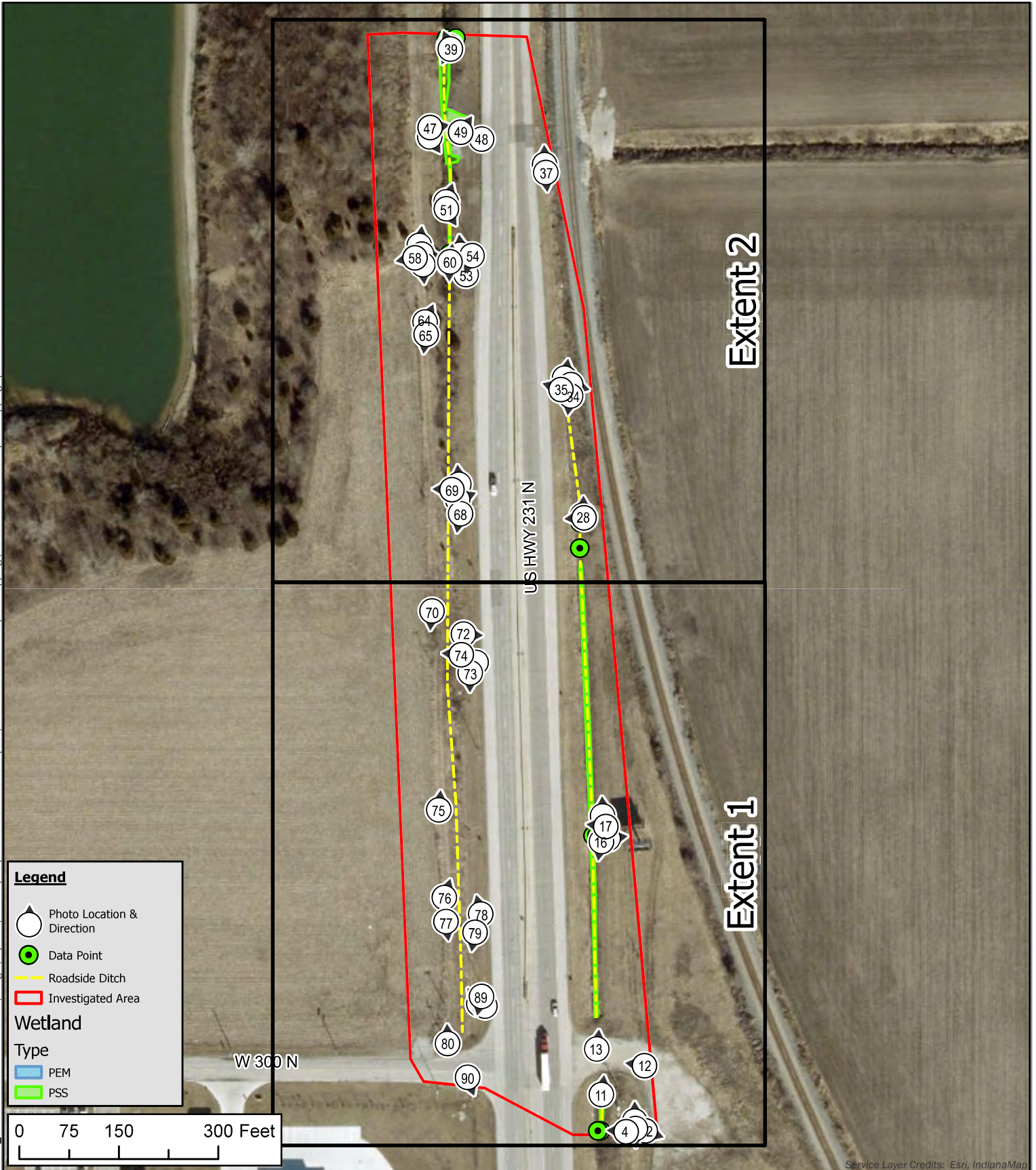
Service Layer Credits: Esri, IndianaMap



Aerial Imagery Map

I-74 at US 231 Access Control Project
Montgomery County, Indiana
Des. Number 2300695



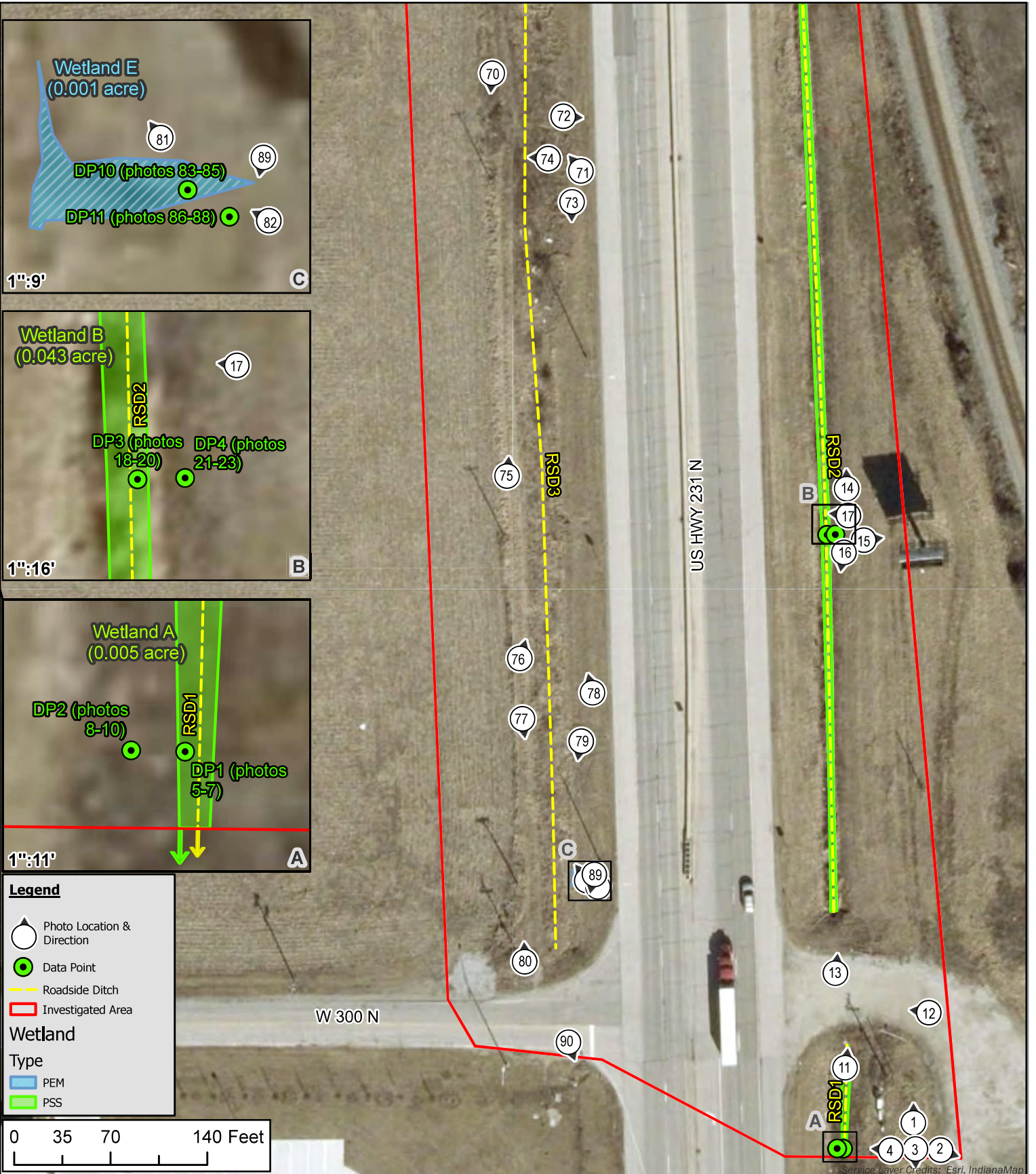


Feature and Photo Location Map - Key

I-74 at US 231 Access Control Project
 Montgomery County, Indiana
 Des. Number 2300695



Date: 10/31/2024 File Path: P:\0740010_INDOT - Access Cr1 2300695\Design\Reports\GIS\Wetland and Waters Report Mapping\Wetland and Waters Report Mapping.aprx



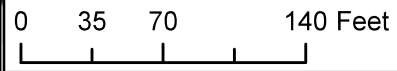
Legend

- Photo Location & Direction
- Data Point
- Roadside Ditch
- Investigated Area

Wetland

Type

- PEM
- PSS

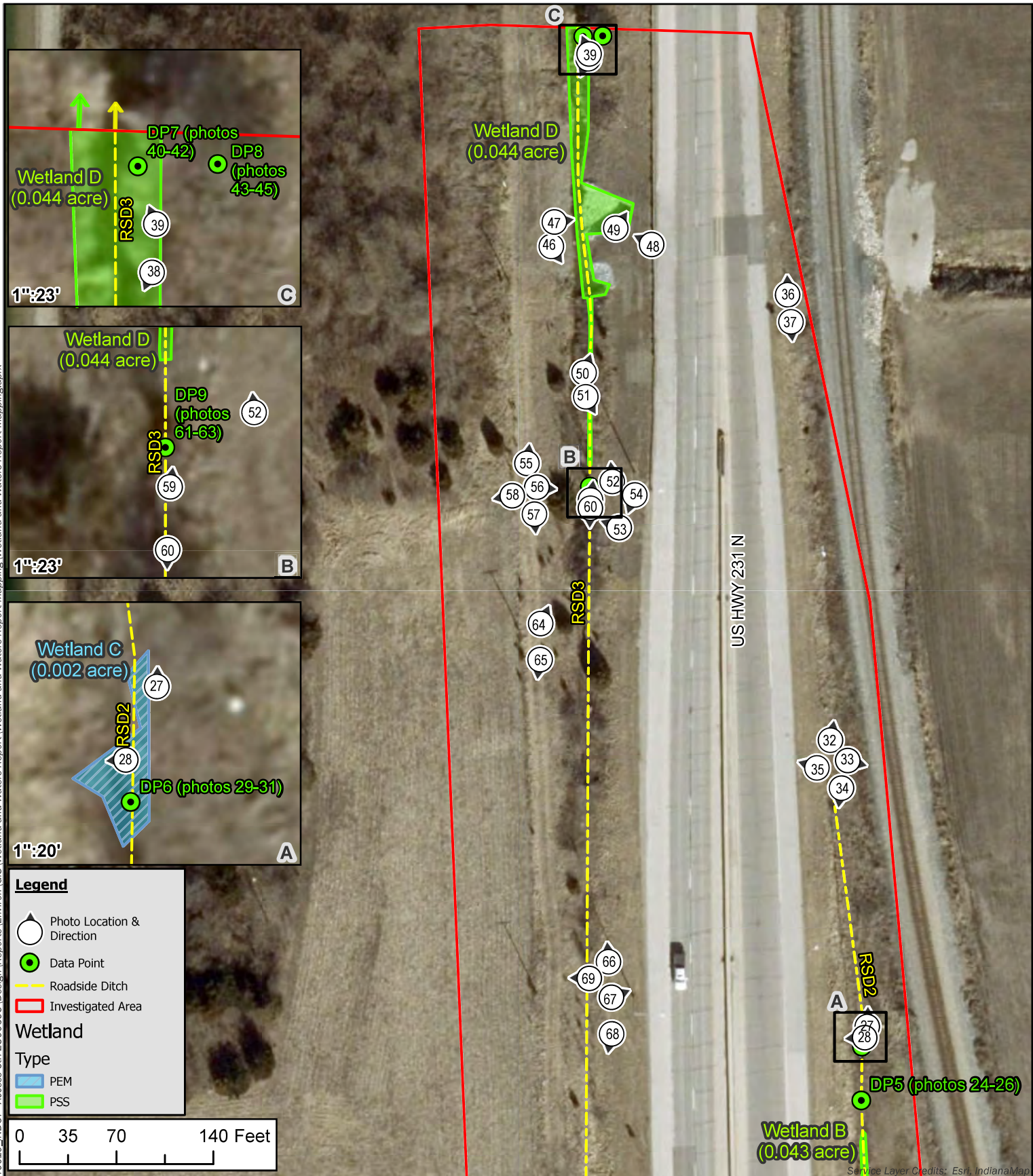


Feature and Photo Location Map - Extent 1

I-74 at US 231 Access Control Project
 Montgomery County, Indiana
 Des. Number 2300695



Date: 10/31/2024 File Path: P:\0740010_INDOT - Access Ctrl_2300695\Design\Reports\GIS\Wetland and Waters Report Mapping\Wetland and Waters Report Mapping.aprx



Feature and Photo Location Map - Extent 2



I-74 at US 231 Access Control Project
 Montgomery County, Indiana
 Des. Number 2300695





Photo 1. Taken east of US 231 facing north showing Wetland A (red arrow) and surrounding area.



Photo 2. Taken east of US 231 facing east. Upland.



Photo 3. Taken east of US 231 facing south showing Wetland A (red arrow) and surrounding area.



Photo 4. Taken east of US 231 facing west showing Wetland A in roadside ditch (RSD) 1 (red arrow).



Photo 5. Taken east of US 231 within Wetland A facing south showing DP1 (shovel).



Photo 6. DP1 soil profile. Soil is hydric.



Photo 7. DP1 soil pit dug to a depth of 20 inches.



Photo 8. Taken east of US 231 within Wetland A, facing southwest showing the location of DP2 (shovel) relative to DP1 (red arrow).



Photo 9. DP2 soil profile. Soil is non-hydric.



Photo 10. DP2 soil pit dug to a depth of 16 inches.



Photo 11. Taken east of US 231 facing north within Wetland A and RSD1 showing drive pipe.



Photo 12. Taken east of US 231 facing west showing the subject drive. Upland.



Photo 13. Taken east of US 231 and north of Wetland A facing north showing Wetland B within RSD2 (red arrow).



Photo 14. Taken east of US 231 facing north showing Wetland B within RSD2 (red arrow) and surrounding area.



Photo 15. Taken east of US 231 and Wetland B facing east. Upland.



Photo 16. Taken east of US 231 facing south showing Wetland B within RSD2 (red arrow) and surrounding area.



Photo 17. Taken east of US 231 facing west showing Wetland B within RSD2 (red arrow).



Photo 18. Taken east of US 231 facing west showing DP3 (shovel) within Wetland B.



Photo 19. DP3 soil profile. Soil is hydric.



Photo 20. DP3 soil pit dug to a depth of 19 inches.



Photo 21. Taken east of US 231 facing west showing the location of DP4 (shovel) relative to DP3 (red arrow).



Photo 22. DP4 soil profile. Soil is non-hydric.



Photo 23. DP4 soil pit dug to a depth of 17 inches.



Photo 24. Taken east of US 231 facing south showing DP5 (shovel) within RSD2.



Photo 25. DP5 soil profile. Soil is non-hydric.



Photo 26. DP5 soil pit dug to a depth of 20 inches.



Photo 27. Taken east of US 231 facing north showing Wetland C within RSD2 (red arrow) and surrounding area.



Photo 28. Taken east of US 231 facing west showing Wetland C (red arrow).



Photo 29. Taken east of US 231 facing south within Wetland C showing DP6 (shovel) relative to DP5 (red arrow).



Photo 30. DP6 soil profile. Soil is hydric.



Photo 31. DP6 soil pit dug to a depth of 20 inches.



Photo 32. Taken east of US 231 and north of RSD2 facing north. Upland.



Photo 33. Taken east of US 231 and north of RSD2 facing east. Upland.



Photo 34. Taken east of US 231 facing south showing RSD2 (red arrow).



Photo 35. Taken east of US 231 within RSD2 facing west. Upland.



Photo 36. Taken east of US 231 facing north. Upland.



Photo 37. Taken east of US 231 facing south. Upland.



Photo 38. Taken west of US 231 facing southwest showing Wetland D within RSD3.



Photo 39. Taken west of US 231 facing northwest showing Wetland D within RSD3.



Photo 40. Taken west of US 231 facing west showing DP7 (shovel) within Wetland D.



Photo 41. DP7 soil profile. Soil is hydric.



Photo 42. DP7 soil pit with water at a depth of 5 inches.



Photo 43. Taken west of US 231 facing east showing the location of DP8 (shovel) relative to DP7 (red arrow).



Photo 44. DP8 soil profile. Soil is non-hydric.



Photo 45. DP8 soil pit dug to a depth of 20 inches.



Photo 46. Taken west of US 231 facing southeast showing Wetland D within RSD3 (red arrow).



Photo 47. Taken west of US 231 facing east showing Wetland D.



Photo 48. Taken west of US 231 and east of Wetland D facing northwest showing Wetland D within RSD3.



Photo 49. Taken west of US 231 facing northeast showing water entering Wetland D.



Photo 50. Taken west of US 231 facing northeast showing Wetland D within RSD3 (red arrow).



Photo 51. Taken west of US 231 facing southeast showing Wetland D within RSD3 (red arrow).



Photo 52. Taken west of US 231 facing north showing Wetland D within RSD3 (red arrow).



Photo 53. Taken west of US 231 facing west showing RSD3 (red arrow).



Photo 54. Taken west of US 231 facing southwest showing RSD3 (red arrow).



Photo 55. Taken west of US 231 facing north showing Wetland D within RSD3 (red arrow) and surrounding area.



Photo 56. Taken west of US 231 facing east showing RSD3 (red arrow).



Photo 57. Taken west of US 231 facing south showing RSD3 (red arrow) and surrounding area.



Photo 58. Taken west of US 231 and RSD3 facing west showing surrounding area. Upland.



Photo 59. Taken west of US 231 and south of Wetland D facing north showing RSD3 (red arrow).



Photo 60. Taken west of US 231 and south of Wetland D facing south showing RSD3 (red arrow).



Photo 61. Taken west of US 231 and south of Wetland D facing north showing DP9 (red arrow).



Photo 62. DP9 soil profile. Soil is non-hydric.



Photo 63. DP9 soil pit dug to a depth of 16 inches.



Photo 64. Taken west of US 231 facing northeast showing RSD3 (red arrow) and surrounding area.



Photo 65. Taken west of US 231 and RSD3 facing south. Upland.



Photo 66. Taken west of US 231 and east of RSD3 facing north showing RSD3 (red arrow).



Photo 67. Taken west of US 231 and east of RSD3 facing northeast. Upland.



Photo 68. Taken west of US 231 and east of RSD3 facing south showing RSD3 (red arrow).



Photo 69. Taken west of US 231 facing west within RSD3. Upland.



Photo 70. Taken west of US 231 and RSD3 facing south. Upland.



Photo 71. Taken west of US 231 and east of RSD3 facing northwest showing RSD3 (red arrow).



Photo 72. Taken west of US 231 and east of RSD3 facing east showing US 231. Upland.



Photo 73. Taken west of US 231 facing south showing RSD3 (red arrow).



Photo 74. Taken west of US 231 facing west showing RSD3 (red arrow).



Photo 75. Taken west of US 231 and RSD3 facing north showing RSD3 (red arrow) and surrounding area.



Photo 76. Taken west of US 231 and RSD3 facing north showing RSD3 (red arrow) and surrounding area.



Photo 77. Taken west of US 231 and RSD3 facing south showing RSD3 (red arrow) and surrounding area.



Photo 78. Taken west of US 231 and east of RSD3 facing north showing RSD3 (red arrow).



Photo 79. Taken west of US 231 and east of RSD3 facing south showing RSD3 (red arrow).



80. Taken west of RSD3 and north of W CR 300 N facing north showing RSD3 (red arrow) and surrounding area.



Photo 81. Taken west of US 231 and east of RSD3 facing northwest showing RSD3 (red arrow) and Wetland E (yellow arrow).



Photo 82. Taken west of US 231 and east of RSD3 facing northwest showing Wetland E.



Photo 83. Taken west of US 231 and east of RSD3 showing DP10 (shovel) within Wetland E.



Photo 84. DP10 soil profile. Soil is hydric.



Photo 85. DP10 soil pit dug to a depth of 20 inches.



Photo 86. Taken west of US 231 facing south showing DP11 (shovel) relative to DP10 (red arrow).



Photo 87. DP11 soil profile. Soil is hydric.



Photo 88. DP11 soil pit dug to a depth of 17 inches.



Photo 89. Taken west of US 231 and north of W CR 300 N facing south showing RSD3 (red arrow) and Wetland E (yellow arrow).



Photo 90. Taken south of W CR 300 N along the road facing southeast showing land adjacent to investigated area.

WETLAND DETERMINATION DATA FORM – Midwest Region

Project/Site: Des. Number 2300695 I74/US231 Access Control City/County: Montgomery County Sampling Date: 2024-08-07
 Applicant/Owner: INDOT State: Indiana Sampling Point: DP1
 Investigator(s): L. Fehlman & C. Fraser Section, Township, Range: S20 T19N R4W
 Landform (hillslope, terrace, etc.): Ditch Local relief (concave, convex, none): Concave
 Slope (%): 0 Lat: 40.082776 Long: -86.90363 Datum: WGS 84
 Soil Map Unit Name: Mc - Mahalasville silty clay loam, gravelly substratum NWI classification: Non-Wetland

Are climatic / hydrologic conditions on the site typical for this time of year? Yes No (If no, explain in Remarks.)
 Are Vegetation , Soil , or Hydrology significantly disturbed? Are "Normal Circumstances" present? Yes No
 Are Vegetation , Soil , or Hydrology naturally problematic? (If needed, explain any answers in Remarks.)

SUMMARY OF FINDINGS – Attach site map showing sampling point locations, transects, important features, etc.

Hydrophytic Vegetation Present? Yes <input checked="" type="checkbox"/> No <input type="checkbox"/> Hydric Soil Present? Yes <input checked="" type="checkbox"/> No <input type="checkbox"/> Wetland Hydrology Present? Yes <input checked="" type="checkbox"/> No <input type="checkbox"/>	Is the Sampled Area within a Wetland? Yes <input checked="" type="checkbox"/> No <input type="checkbox"/>
Remarks:	

VEGETATION – Use scientific names of plants.

Tree Stratum (Plot size: <u>30 ft r</u>)	Absolute % Cover	Dominant Species?	Indicator Status	
1. _____	_____	_____	_____	
2. _____	_____	_____	_____	
3. _____	_____	_____	_____	
4. _____	_____	_____	_____	
5. _____	_____	_____	_____	
= Total Cover				
Sapling/Shrub Stratum (Plot size: <u>15 ft r</u>)				
1. <u>Salix interior</u>	<u>70</u>	<input checked="" type="checkbox"/>	<u>FACW</u>	
2. _____	_____	_____	_____	
3. _____	_____	_____	_____	
4. _____	_____	_____	_____	
5. _____	_____	_____	_____	
= Total Cover				
Herb Stratum (Plot size: <u>5 ft r</u>)				
1. <u>Leersia virginica</u>	<u>30</u>	<input checked="" type="checkbox"/>	<u>FACW</u>	
2. <u>Ambrosia trifida</u>	<u>5</u>	_____	<u>FAC</u>	
3. <u>Rumex crispus</u>	<u>1</u>	_____	<u>FAC</u>	
4. <u>Toxicodendron radicans</u>	<u>1</u>	_____	<u>FAC</u>	
5. _____	_____	_____	_____	
6. _____	_____	_____	_____	
7. _____	_____	_____	_____	
8. _____	_____	_____	_____	
9. _____	_____	_____	_____	
10. _____	_____	_____	_____	
= Total Cover				
Woody Vine Stratum (Plot size: <u>30 ft r</u>)				
1. _____	_____	_____	_____	
2. _____	_____	_____	_____	
= Total Cover				

Dominance Test worksheet:	
Number of Dominant Species That Are OBL, FACW, or FAC: <u>2</u>	(A)
Total Number of Dominant Species Across All Strata: <u>2</u>	(B)
Percent of Dominant Species That Are OBL, FACW, or FAC: <u>100.00</u>	(A/B)
Prevalence Index worksheet:	
<u>0</u> x 1 = <u>0</u>	
<u>100</u> x 2 = <u>200</u>	
<u>7</u> x 3 = <u>21</u>	
<u>0</u> x 4 = <u>0</u>	
<u>0</u> x 5 = <u>0</u>	
Column Totals: <u>107</u> (A) <u>221</u> (B)	
Prevalence Index = B/A = <u>2.06</u>	
Hydrophytic Vegetation Indicators:	
<input checked="" type="checkbox"/> 1 - Rapid Test for Hydrophytic Vegetation	
<input checked="" type="checkbox"/> 2 - Dominance Test is >50%	
<input checked="" type="checkbox"/> 3 - Prevalence Index is $\leq 3.0^1$	
____ 4 - Morphological Adaptations ¹ (Provide supporting data in Remarks or on a separate sheet)	
____ Problematic Hydrophytic Vegetation ¹ (Explain)	
¹ Indicators of hydric soil and wetland hydrology must be present, unless disturbed or problematic.	
Hydrophytic Vegetation Present? Yes <input checked="" type="checkbox"/> No <input type="checkbox"/>	

Remarks: (Include photo numbers here or on a separate sheet.)

SOIL

Sampling Point: DP1

Profile Description: (Describe to the depth needed to document the indicator or confirm the absence of indicators.)								
Depth (inches)	Matrix		Redox Features				Texture	Remarks
	Color (moist)	%	Color (moist)	%	Type ¹	Loc ²		
0 - 4	10YR 3/1	100					Silt	
4 - 8	10YR 3/1	78	10YR 4/3	20	C	M	Silty Clay Loam	
4 - 8			7.5YR 4/6	2	C	M		
8 - 14	10YR 4/1	60	5GY 6/	20	C	M	Clay	50% Fill Mix
8 - 14			7.5YR 4/6	20	C	M		
14 - 15	10YR 3/1	100					Sandy Clay Loam	
15 - 20	10YR 4/1	60	5GY 6/	40	C	M	Clay	50% Fill

¹Type: C=Concentration, D=Depletion, RM=Reduced Matrix, MS=Masked Sand Grains. ²Location: PL=Pore Lining, M=Matrix.

Hydric Soil Indicators: <input type="checkbox"/> Histosol (A1) <input type="checkbox"/> Histic Epipedon (A2) <input type="checkbox"/> Black Histic (A3) <input type="checkbox"/> Hydrogen Sulfide (A4) <input type="checkbox"/> Stratified Layers (A5) <input type="checkbox"/> 2 cm Muck (A10) <input type="checkbox"/> Depleted Below Dark Surface (A11) <input type="checkbox"/> Thick Dark Surface (A12) <input type="checkbox"/> Sandy Mucky Mineral (S1) <input type="checkbox"/> 5 cm Mucky Peat or Peat (S3)	<input type="checkbox"/> Sandy Gleyed Matrix (S4) <input type="checkbox"/> Sandy Redox (S5) <input type="checkbox"/> Stripped Matrix (S6) <input type="checkbox"/> Loamy Mucky Mineral (F1) <input type="checkbox"/> Loamy Gleyed Matrix (F2) <input type="checkbox"/> Depleted Matrix (F3) <input checked="" type="checkbox"/> Redox Dark Surface (F6) <input type="checkbox"/> Depleted Dark Surface (F7) <input type="checkbox"/> Redox Depressions (F8)	Indicators for Problematic Hydric Soils³: <input type="checkbox"/> Coast Prairie Redox (A16) <input type="checkbox"/> Dark Surface (S7) <input type="checkbox"/> Iron-Manganese Masses (F12) <input type="checkbox"/> Very Shallow Dark Surface (TF12) <input type="checkbox"/> Other (Explain in Remarks)
---	---	---

³Indicators of hydrophytic vegetation and wetland hydrology must be present, unless disturbed or problematic.

Restrictive Layer (if observed): Type: _____ Depth (inches): _____	Hydric Soil Present? Yes <input checked="" type="checkbox"/> No _____
---	--

Remarks:

HYDROLOGY

Wetland Hydrology Indicators: Primary Indicators (minimum of one is required: check all that apply)			Secondary Indicators (minimum of two required)		
<input type="checkbox"/> Surface Water (A1) <input type="checkbox"/> High Water Table (A2) <input checked="" type="checkbox"/> Saturation (A3) <input type="checkbox"/> Water Marks (B1) <input type="checkbox"/> Sediment Deposits (B2) <input type="checkbox"/> Drift Deposits (B3) <input type="checkbox"/> Algal Mat or Crust (B4) <input type="checkbox"/> Iron Deposits (B5) <input type="checkbox"/> Inundation Visible on Aerial Imagery (B7) <input type="checkbox"/> Sparsely Vegetated Concave Surface (B8)	<input type="checkbox"/> Water-Stained Leaves (B9) <input type="checkbox"/> Aquatic Fauna (B13) <input type="checkbox"/> True Aquatic Plants (B14) <input type="checkbox"/> Hydrogen Sulfide Odor (C1) <input type="checkbox"/> Oxidized Rhizospheres on Living Roots (C3) <input type="checkbox"/> Presence of Reduced Iron (C4) <input type="checkbox"/> Recent Iron Reduction in Tilled Soils (C6) <input type="checkbox"/> Thin Muck Surface (C7) <input type="checkbox"/> Gauge or Well Data (D9) <input type="checkbox"/> Other (Explain in Remarks)	<input type="checkbox"/> Surface Soil Cracks (B6) <input type="checkbox"/> Drainage Patterns (B10) <input type="checkbox"/> Dry-Season Water Table (C2) <input type="checkbox"/> Crayfish Burrows (C8) <input type="checkbox"/> Saturation Visible on Aerial Imagery (C9) <input type="checkbox"/> Stunted or Stressed Plants (D1) <input checked="" type="checkbox"/> Geomorphic Position (D2) <input checked="" type="checkbox"/> FAC-Neutral Test (D5)			
Field Observations: Surface Water Present? Yes _____ No <input checked="" type="checkbox"/> Depth (inches): _____ Water Table Present? Yes <input checked="" type="checkbox"/> No _____ Depth (inches): <u>20</u> Saturation Present? Yes <input checked="" type="checkbox"/> No _____ Depth (inches): <u>12</u> (includes capillary fringe)			Wetland Hydrology Present? Yes <input checked="" type="checkbox"/> No _____		
Describe Recorded Data (stream gauge, monitoring well, aerial photos, previous inspections), if available:					
Remarks:					

WETLAND DETERMINATION DATA FORM – Midwest Region

Project/Site: Des. Number 2300695 I74/US231 Access Control City/County: Montgomery County Sampling Date: 2024-08-07
 Applicant/Owner: INDOT State: Indiana Sampling Point: DP2
 Investigator(s): L. Fehlman & C. Fraser Section, Township, Range: S20 T19N R4W
 Landform (hillslope, terrace, etc.): Ditch Local relief (concave, convex, none): Concave
 Slope (%): 0.5 Lat: 40.082776 Long: -86.903642 Datum: WGS 84
 Soil Map Unit Name: Mc - Mahalasville silty clay loam, gravelly substratum NWI classification: Non-Wetland

Are climatic / hydrologic conditions on the site typical for this time of year? Yes No (If no, explain in Remarks.)
 Are Vegetation , Soil , or Hydrology significantly disturbed? Are "Normal Circumstances" present? Yes No
 Are Vegetation , Soil , or Hydrology naturally problematic? (If needed, explain any answers in Remarks.)

SUMMARY OF FINDINGS – Attach site map showing sampling point locations, transects, important features, etc.

Hydrophytic Vegetation Present?	Yes <input type="checkbox"/>	No <input checked="" type="checkbox"/>	Is the Sampled Area within a Wetland?	Yes <input type="checkbox"/>	No <input checked="" type="checkbox"/>
Hydric Soil Present?	Yes <input type="checkbox"/>	No <input checked="" type="checkbox"/>		Yes <input type="checkbox"/>	No <input checked="" type="checkbox"/>
Wetland Hydrology Present?	Yes <input type="checkbox"/>	No <input checked="" type="checkbox"/>		Yes <input type="checkbox"/>	No <input checked="" type="checkbox"/>
Remarks:					

VEGETATION – Use scientific names of plants.

Tree Stratum (Plot size: <u>30 ft r</u>)	Absolute % Cover	Dominant Species?	Indicator Status	
1. _____	_____	_____	_____	
2. _____	_____	_____	_____	
3. _____	_____	_____	_____	
4. _____	_____	_____	_____	
5. _____	_____	_____	_____	
				= Total Cover
Sapling/Shrub Stratum (Plot size: <u>15 ft r</u>)				
1. _____	_____	_____	_____	
2. _____	_____	_____	_____	
3. _____	_____	_____	_____	
4. _____	_____	_____	_____	
5. _____	_____	_____	_____	
				= Total Cover
Herb Stratum (Plot size: <u>5 ft r</u>)				
1. <u>Ambrosia trifida</u>	<u>50</u>	<input checked="" type="checkbox"/>	<u>FAC</u>	
2. <u>Plantago lanceolata</u>	<u>30</u>	<input checked="" type="checkbox"/>	<u>FACU</u>	
3. <u>Rumex crispus</u>	<u>5</u>		<u>FAC</u>	
4. <u>Solidago altissima</u>	<u>5</u>		<u>FACU</u>	
5. <u>Daucus carota</u>	<u>1</u>		<u>UPL</u>	
6. _____	_____	_____	_____	
7. _____	_____	_____	_____	
8. _____	_____	_____	_____	
9. _____	_____	_____	_____	
10. _____	_____	_____	_____	
				<u>91</u> = Total Cover
Woody Vine Stratum (Plot size: <u>30 ft r</u>)				
1. _____	_____	_____	_____	
2. _____	_____	_____	_____	
				= Total Cover
Remarks: (Include photo numbers here or on a separate sheet.)				

Dominance Test worksheet:

Number of Dominant Species That Are OBL, FACW, or FAC: 1 (A)

Total Number of Dominant Species Across All Strata: 2 (B)

Percent of Dominant Species That Are OBL, FACW, or FAC: 50.00 (A/B)

Prevalence Index worksheet:

	Total % Cover of:	Multiply by:
OBL species	<u>0</u>	x 1 = <u>0</u>
FACW species	<u>0</u>	x 2 = <u>0</u>
FAC species	<u>55</u>	x 3 = <u>165</u>
FACU species	<u>35</u>	x 4 = <u>140</u>
UPL species	<u>1</u>	x 5 = <u>5</u>
Column Totals:	<u>91</u> (A)	<u>310</u> (B)

Prevalence Index = B/A = 3.40

Hydrophytic Vegetation Indicators:

1 - Rapid Test for Hydrophytic Vegetation

2 - Dominance Test is >50%

3 - Prevalence Index is ≤3.0¹

4 - Morphological Adaptations¹ (Provide supporting data in Remarks or on a separate sheet)

Problematic Hydrophytic Vegetation¹ (Explain)

¹Indicators of hydric soil and wetland hydrology must be present, unless disturbed or problematic.

Hydrophytic Vegetation Present? Yes No

SOIL

Sampling Point: DP2

Profile Description: (Describe to the depth needed to document the indicator or confirm the absence of indicators.)								
Depth (inches)	Matrix		Redox Features				Texture	Remarks
	Color (moist)	%	Color (moist)	%	Type ¹	Loc ²		
0 - 16	10YR 4/2	100					Sandy Clay Loam	15% Fill
-								
-								
-								
-								
-								
-								
-								
-								
¹ Type: C=Concentration, D=Depletion, RM=Reduced Matrix, MS=Masked Sand Grains.					² Location: PL=Pore Lining, M=Matrix.			
Hydric Soil Indicators:						Indicators for Problematic Hydric Soils³:		
<input type="checkbox"/> Histosol (A1) <input type="checkbox"/> Histic Epipedon (A2) <input type="checkbox"/> Black Histic (A3) <input type="checkbox"/> Hydrogen Sulfide (A4) <input type="checkbox"/> Stratified Layers (A5) <input type="checkbox"/> 2 cm Muck (A10) <input type="checkbox"/> Depleted Below Dark Surface (A11) <input type="checkbox"/> Thick Dark Surface (A12) <input type="checkbox"/> Sandy Mucky Mineral (S1) <input type="checkbox"/> 5 cm Mucky Peat or Peat (S3)			<input type="checkbox"/> Sandy Gleyed Matrix (S4) <input type="checkbox"/> Sandy Redox (S5) <input type="checkbox"/> Stripped Matrix (S6) <input type="checkbox"/> Loamy Mucky Mineral (F1) <input type="checkbox"/> Loamy Gleyed Matrix (F2) <input type="checkbox"/> Depleted Matrix (F3) <input type="checkbox"/> Redox Dark Surface (F6) <input type="checkbox"/> Depleted Dark Surface (F7) <input type="checkbox"/> Redox Depressions (F8)			<input type="checkbox"/> Coast Prairie Redox (A16) <input type="checkbox"/> Dark Surface (S7) <input type="checkbox"/> Iron-Manganese Masses (F12) <input type="checkbox"/> Very Shallow Dark Surface (TF12) <input type="checkbox"/> Other (Explain in Remarks)		
Restrictive Layer (if observed):								
Type: _____								
Depth (inches): _____						Hydric Soil Present? Yes _____ No <input checked="" type="checkbox"/>		
Remarks:								

HYDROLOGY

Wetland Hydrology Indicators:		
Primary Indicators (minimum of one is required: check all that apply)	Secondary Indicators (minimum of two required)	
<input type="checkbox"/> Surface Water (A1) <input type="checkbox"/> High Water Table (A2) <input type="checkbox"/> Saturation (A3) <input type="checkbox"/> Water Marks (B1) <input type="checkbox"/> Sediment Deposits (B2) <input type="checkbox"/> Drift Deposits (B3) <input type="checkbox"/> Algal Mat or Crust (B4) <input type="checkbox"/> Iron Deposits (B5) <input type="checkbox"/> Inundation Visible on Aerial Imagery (B7) <input type="checkbox"/> Sparsely Vegetated Concave Surface (B8)	<input type="checkbox"/> Water-Stained Leaves (B9) <input type="checkbox"/> Aquatic Fauna (B13) <input type="checkbox"/> True Aquatic Plants (B14) <input type="checkbox"/> Hydrogen Sulfide Odor (C1) <input type="checkbox"/> Oxidized Rhizospheres on Living Roots (C3) <input type="checkbox"/> Presence of Reduced Iron (C4) <input type="checkbox"/> Recent Iron Reduction in Tilled Soils (C6) <input type="checkbox"/> Thin Muck Surface (C7) <input type="checkbox"/> Gauge or Well Data (D9) <input type="checkbox"/> Other (Explain in Remarks)	<input type="checkbox"/> Surface Soil Cracks (B6) <input type="checkbox"/> Drainage Patterns (B10) <input type="checkbox"/> Dry-Season Water Table (C2) <input type="checkbox"/> Crayfish Burrows (C8) <input type="checkbox"/> Saturation Visible on Aerial Imagery (C9) <input type="checkbox"/> Stunted or Stressed Plants (D1) <input type="checkbox"/> Geomorphic Position (D2) <input type="checkbox"/> FAC-Neutral Test (D5)
Field Observations:		
Surface Water Present? Yes _____ No <input checked="" type="checkbox"/>	Depth (inches): _____	
Water Table Present? Yes _____ No <input checked="" type="checkbox"/>	Depth (inches): _____	
Saturation Present? Yes _____ No <input checked="" type="checkbox"/> (includes capillary fringe)	Depth (inches): _____	Wetland Hydrology Present? Yes _____ No <input checked="" type="checkbox"/>
Describe Recorded Data (stream gauge, monitoring well, aerial photos, previous inspections), if available:		
Remarks:		

WETLAND DETERMINATION DATA FORM – Midwest Region

Project/Site: Des. Number 2300695 I74/US231 Access Control City/County: Montgomery County Sampling Date: 2024-08-07
 Applicant/Owner: INDOT State: Indiana Sampling Point: DP3
 Investigator(s): L. Fehlman & C. Fraser Section, Township, Range: S17 T19N R4W
 Landform (hillslope, terrace, etc.): Ditch Local relief (concave, convex, none): Concave
 Slope (%): 0 Lat: 40.083709 Long: -86.903662 Datum: WGS 84
 Soil Map Unit Name: WdA - Waynetown silt loam, 0 to 2 percent slopes NWI classification: Non-Wetland

Are climatic / hydrologic conditions on the site typical for this time of year? Yes No (If no, explain in Remarks.)
 Are Vegetation , Soil , or Hydrology significantly disturbed? Are "Normal Circumstances" present? Yes No
 Are Vegetation , Soil , or Hydrology naturally problematic? (If needed, explain any answers in Remarks.)

SUMMARY OF FINDINGS – Attach site map showing sampling point locations, transects, important features, etc.

Hydrophytic Vegetation Present? Yes <input checked="" type="checkbox"/> No <input type="checkbox"/> Hydric Soil Present? Yes <input checked="" type="checkbox"/> No <input type="checkbox"/> Wetland Hydrology Present? Yes <input checked="" type="checkbox"/> No <input type="checkbox"/>	Is the Sampled Area within a Wetland? Yes <input checked="" type="checkbox"/> No <input type="checkbox"/>
Remarks:	

VEGETATION – Use scientific names of plants.

Tree Stratum (Plot size: <u>30 ft r</u>)	Absolute % Cover	Dominant Species?	Indicator Status	
1. _____	_____	_____	_____	
2. _____	_____	_____	_____	
3. _____	_____	_____	_____	
4. _____	_____	_____	_____	
5. _____	_____	_____	_____	
_____ = Total Cover				
Sapling/Shrub Stratum (Plot size: <u>15 ft r</u>)	Absolute % Cover	Dominant Species?	Indicator Status	
1. _____	_____	_____	_____	
2. _____	_____	_____	_____	
3. _____	_____	_____	_____	
4. _____	_____	_____	_____	
5. _____	_____	_____	_____	
_____ = Total Cover				
Herb Stratum (Plot size: <u>5 ft r</u>)	Absolute % Cover	Dominant Species?	Indicator Status	
1. <u>Typha X glauca</u>	<u>88</u>	<input checked="" type="checkbox"/>	<u>OBL</u>	
2. <u>Leersia virginica</u>	<u>5</u>	<input type="checkbox"/>	<u>FACW</u>	
3. <u>Festuca rubra</u>	<u>2</u>	<input type="checkbox"/>	<u>FACU</u>	
4. <u>Geum canadense</u>	<u>2</u>	<input type="checkbox"/>	<u>FAC</u>	
5. <u>Ipomoea purpurea</u>	<u>2</u>	<input type="checkbox"/>	<u>FACU</u>	
6. <u>Cirsium arvense</u>	<u>1</u>	<input type="checkbox"/>	<u>FACU</u>	
7. _____	_____	_____	_____	
8. _____	_____	_____	_____	
9. _____	_____	_____	_____	
10. _____	_____	_____	_____	
<u>100</u> = Total Cover				
Woody Vine Stratum (Plot size: <u>30 ft r</u>)	Absolute % Cover	Dominant Species?	Indicator Status	
1. _____	_____	_____	_____	
2. _____	_____	_____	_____	
_____ = Total Cover				

Dominance Test worksheet:
 Number of Dominant Species That Are OBL, FACW, or FAC: 1 (A)
 Total Number of Dominant Species Across All Strata: 1 (B)
 Percent of Dominant Species That Are OBL, FACW, or FAC: 100.00 (A/B)

Prevalence Index worksheet:
 Total % Cover of: Multiply by:
 OBL species 88 x 1 = 88
 FACW species 5 x 2 = 10
 FAC species 2 x 3 = 6
 FACU species 5 x 4 = 20
 UPL species 0 x 5 = 0
 Column Totals: 100 (A) 124 (B)
 Prevalence Index = B/A = 1.24

Hydrophytic Vegetation Indicators:
 1 - Rapid Test for Hydrophytic Vegetation
 2 - Dominance Test is >50%
 3 - Prevalence Index is ≤3.0¹
 4 - Morphological Adaptations¹ (Provide supporting data in Remarks or on a separate sheet)
 Problematic Hydrophytic Vegetation¹ (Explain)

¹Indicators of hydric soil and wetland hydrology must be present, unless disturbed or problematic.

Hydrophytic Vegetation Present? Yes <input checked="" type="checkbox"/> No <input type="checkbox"/>

Remarks: (Include photo numbers here or on a separate sheet.)

SOIL

Sampling Point: DP3

Profile Description: (Describe to the depth needed to document the indicator or confirm the absence of indicators.)								
Depth (inches)	Matrix		Redox Features				Texture	Remarks
	Color (moist)	%	Color (moist)	%	Type ¹	Loc ²		
0 - 5	10YR 3/1	100					Sandy Clay Loam	Lots of roots
5 - 10	10YR 3/1	98	7.5YR 4/6	2	C	M	Clay	20% Fill
10 - 19								100% Fill Mix
-								
-								
-								
-								

¹Type: C=Concentration, D=Depletion, RM=Reduced Matrix, MS=Masked Sand Grains. ²Location: PL=Pore Lining, M=Matrix.

Hydric Soil Indicators: <input type="checkbox"/> Histosol (A1) <input type="checkbox"/> Histic Epipedon (A2) <input type="checkbox"/> Black Histic (A3) <input type="checkbox"/> Hydrogen Sulfide (A4) <input type="checkbox"/> Stratified Layers (A5) <input type="checkbox"/> 2 cm Muck (A10) <input type="checkbox"/> Depleted Below Dark Surface (A11) <input type="checkbox"/> Thick Dark Surface (A12) <input type="checkbox"/> Sandy Mucky Mineral (S1) <input type="checkbox"/> 5 cm Mucky Peat or Peat (S3)	Indicators for Problematic Hydric Soils³: <input type="checkbox"/> Sandy Gleyed Matrix (S4) <input type="checkbox"/> Sandy Redox (S5) <input type="checkbox"/> Stripped Matrix (S6) <input type="checkbox"/> Loamy Mucky Mineral (F1) <input type="checkbox"/> Loamy Gleyed Matrix (F2) <input type="checkbox"/> Depleted Matrix (F3) <input checked="" type="checkbox"/> Redox Dark Surface (F6) <input type="checkbox"/> Depleted Dark Surface (F7) <input type="checkbox"/> Redox Depressions (F8) <input type="checkbox"/> Coast Prairie Redox (A16) <input type="checkbox"/> Dark Surface (S7) <input type="checkbox"/> Iron-Manganese Masses (F12) <input type="checkbox"/> Very Shallow Dark Surface (TF12) <input type="checkbox"/> Other (Explain in Remarks)
---	--

³Indicators of hydrophytic vegetation and wetland hydrology must be present, unless disturbed or problematic.

Restrictive Layer (if observed): Type: _____ Depth (inches): _____	Hydric Soil Present? Yes <input checked="" type="checkbox"/> No <input type="checkbox"/>
---	---

Remarks:
100% Fill mixture begins at 10" below ground surface

HYDROLOGY

Wetland Hydrology Indicators:		
Primary Indicators (minimum of one is required: check all that apply)	Secondary Indicators (minimum of two required)	
<input type="checkbox"/> Surface Water (A1) <input type="checkbox"/> High Water Table (A2) <input checked="" type="checkbox"/> Saturation (A3) <input type="checkbox"/> Water Marks (B1) <input type="checkbox"/> Sediment Deposits (B2) <input type="checkbox"/> Drift Deposits (B3) <input type="checkbox"/> Algal Mat or Crust (B4) <input type="checkbox"/> Iron Deposits (B5) <input type="checkbox"/> Inundation Visible on Aerial Imagery (B7) <input type="checkbox"/> Sparsely Vegetated Concave Surface (B8)	<input type="checkbox"/> Water-Stained Leaves (B9) <input type="checkbox"/> Aquatic Fauna (B13) <input type="checkbox"/> True Aquatic Plants (B14) <input type="checkbox"/> Hydrogen Sulfide Odor (C1) <input type="checkbox"/> Oxidized Rhizospheres on Living Roots (C3) <input type="checkbox"/> Presence of Reduced Iron (C4) <input type="checkbox"/> Recent Iron Reduction in Tilled Soils (C6) <input type="checkbox"/> Thin Muck Surface (C7) <input type="checkbox"/> Gauge or Well Data (D9) <input type="checkbox"/> Other (Explain in Remarks)	<input type="checkbox"/> Surface Soil Cracks (B6) <input type="checkbox"/> Drainage Patterns (B10) <input type="checkbox"/> Dry-Season Water Table (C2) <input checked="" type="checkbox"/> Crayfish Burrows (C8) <input type="checkbox"/> Saturation Visible on Aerial Imagery (C9) <input type="checkbox"/> Stunted or Stressed Plants (D1) <input checked="" type="checkbox"/> Geomorphic Position (D2) <input checked="" type="checkbox"/> FAC-Neutral Test (D5)
Field Observations: Surface Water Present? Yes <input type="checkbox"/> No <input checked="" type="checkbox"/> Depth (inches): _____ Water Table Present? Yes <input checked="" type="checkbox"/> No <input type="checkbox"/> Depth (inches): <u>20</u> Saturation Present? Yes <input checked="" type="checkbox"/> No <input type="checkbox"/> Depth (inches): <u>12</u> (includes capillary fringe)		Wetland Hydrology Present? Yes <input checked="" type="checkbox"/> No <input type="checkbox"/>
Describe Recorded Data (stream gauge, monitoring well, aerial photos, previous inspections), if available:		
Remarks:		

WETLAND DETERMINATION DATA FORM – Midwest Region

Project/Site: Des. Number 2300695 I74/US231 Access Control City/County: Montgomery County Sampling Date: 2024-08-07
 Applicant/Owner: INDOT State: Indiana Sampling Point: DP4
 Investigator(s): L. Fehlman & C. Fraser Section, Township, Range: S17 T19N R4W
 Landform (hillslope, terrace, etc.): Ditch Local relief (concave, convex, none): Concave
 Slope (%): 0.5 Lat: 40.08371 Long: -86.903645 Datum: WGS 84
 Soil Map Unit Name: WdA - Waynetown silt loam, 0 to 2 percent slopes NWI classification: Non-Wetland

Are climatic / hydrologic conditions on the site typical for this time of year? Yes No (If no, explain in Remarks.)
 Are Vegetation , Soil , or Hydrology significantly disturbed? Are "Normal Circumstances" present? Yes No
 Are Vegetation , Soil , or Hydrology naturally problematic? (If needed, explain any answers in Remarks.)

SUMMARY OF FINDINGS – Attach site map showing sampling point locations, transects, important features, etc.

Hydrophytic Vegetation Present?	Yes <input type="checkbox"/>	No <input checked="" type="checkbox"/>	Is the Sampled Area within a Wetland? Yes <input type="checkbox"/> No <input checked="" type="checkbox"/>
Hydric Soil Present?	Yes <input type="checkbox"/>	No <input checked="" type="checkbox"/>	
Wetland Hydrology Present?	Yes <input type="checkbox"/>	No <input checked="" type="checkbox"/>	
Remarks:			

VEGETATION – Use scientific names of plants.

Tree Stratum (Plot size: <u>30 ft r</u>)	Absolute % Cover	Dominant Species?	Indicator Status	
1. _____				
2. _____				
3. _____				
4. _____				
5. _____				
				_____ = Total Cover
Sapling/Shrub Stratum (Plot size: <u>15 ft r</u>)				
1. _____				
2. _____				
3. _____				
4. _____				
5. _____				
				_____ = Total Cover
Herb Stratum (Plot size: <u>5 ft r</u>)				
1. <u>Festuca rubra</u>	<u>90</u>	<input checked="" type="checkbox"/>	<u>FACU</u>	
2. <u>Geum canadense</u>	<u>10</u>		<u>FAC</u>	
3. <u>Vernonia fasciculata</u>	<u>10</u>		<u>FACW</u>	
4. <u>Daucus carota</u>	<u>2</u>		<u>UPL</u>	
5. _____				
6. _____				
7. _____				
8. _____				
9. _____				
10. _____				
				<u>112</u> = Total Cover
Woody Vine Stratum (Plot size: <u>30 ft r</u>)				
1. _____				
2. _____				
				_____ = Total Cover
Remarks: (Include photo numbers here or on a separate sheet.)				

Dominance Test worksheet:
 Number of Dominant Species That Are OBL, FACW, or FAC: 0 (A)
 Total Number of Dominant Species Across All Strata: 1 (B)
 Percent of Dominant Species That Are OBL, FACW, or FAC: 0.00 (A/B)

Prevalence Index worksheet:
 Total % Cover of: Multiply by:
 OBL species 0 x 1 = 0
 FACW species 10 x 2 = 20
 FAC species 10 x 3 = 30
 FACU species 90 x 4 = 360
 UPL species 2 x 5 = 10
 Column Totals: 112 (A) 420 (B)
 Prevalence Index = B/A = 3.75

Hydrophytic Vegetation Indicators:
 1 - Rapid Test for Hydrophytic Vegetation
 2 - Dominance Test is >50%
 3 - Prevalence Index is ≤3.0¹
 4 - Morphological Adaptations¹ (Provide supporting data in Remarks or on a separate sheet)
 Problematic Hydrophytic Vegetation¹ (Explain)

¹Indicators of hydric soil and wetland hydrology must be present, unless disturbed or problematic.

Hydrophytic Vegetation Present? Yes No

SOIL

Sampling Point: DP4

Profile Description: (Describe to the depth needed to document the indicator or confirm the absence of indicators.)								
Depth (inches)	Matrix		Redox Features				Texture	Remarks
	Color (moist)	%	Color (moist)	%	Type ¹	Loc ²		
0 - 13	10YR 3/3	100					Silt Loam	
13 - 17	10YR 3/3	97	10YR 5/8	3	C	M	Silt Loam	
-								
-								
-								
-								
-								

¹Type: C=Concentration, D=Depletion, RM=Reduced Matrix, MS=Masked Sand Grains. ²Location: PL=Pore Lining, M=Matrix.

Hydric Soil Indicators: <input type="checkbox"/> Histosol (A1) <input type="checkbox"/> Histic Epipedon (A2) <input type="checkbox"/> Black Histic (A3) <input type="checkbox"/> Hydrogen Sulfide (A4) <input type="checkbox"/> Stratified Layers (A5) <input type="checkbox"/> 2 cm Muck (A10) <input type="checkbox"/> Depleted Below Dark Surface (A11) <input type="checkbox"/> Thick Dark Surface (A12) <input type="checkbox"/> Sandy Mucky Mineral (S1) <input type="checkbox"/> 5 cm Mucky Peat or Peat (S3)	<input type="checkbox"/> Sandy Gleyed Matrix (S4) <input type="checkbox"/> Sandy Redox (S5) <input type="checkbox"/> Stripped Matrix (S6) <input type="checkbox"/> Loamy Mucky Mineral (F1) <input type="checkbox"/> Loamy Gleyed Matrix (F2) <input type="checkbox"/> Depleted Matrix (F3) <input type="checkbox"/> Redox Dark Surface (F6) <input type="checkbox"/> Depleted Dark Surface (F7) <input type="checkbox"/> Redox Depressions (F8)
---	--

Restrictive Layer (if observed): Type: _____ Depth (inches): _____	Indicators for Problematic Hydric Soils³: <input type="checkbox"/> Coast Prairie Redox (A16) <input type="checkbox"/> Dark Surface (S7) <input type="checkbox"/> Iron-Manganese Masses (F12) <input type="checkbox"/> Very Shallow Dark Surface (TF12) <input type="checkbox"/> Other (Explain in Remarks)
---	---

³Indicators of hydrophytic vegetation and wetland hydrology must be present, unless disturbed or problematic.

	Hydric Soil Present? Yes _____ No <input checked="" type="checkbox"/>
--	---

Remarks:

HYDROLOGY

Wetland Hydrology Indicators:		
Primary Indicators (minimum of one is required: check all that apply)	Secondary Indicators (minimum of two required)	
<input type="checkbox"/> Surface Water (A1) <input type="checkbox"/> High Water Table (A2) <input type="checkbox"/> Saturation (A3) <input type="checkbox"/> Water Marks (B1) <input type="checkbox"/> Sediment Deposits (B2) <input type="checkbox"/> Drift Deposits (B3) <input type="checkbox"/> Algal Mat or Crust (B4) <input type="checkbox"/> Iron Deposits (B5) <input type="checkbox"/> Inundation Visible on Aerial Imagery (B7) <input type="checkbox"/> Sparsely Vegetated Concave Surface (B8)	<input type="checkbox"/> Water-Stained Leaves (B9) <input type="checkbox"/> Aquatic Fauna (B13) <input type="checkbox"/> True Aquatic Plants (B14) <input type="checkbox"/> Hydrogen Sulfide Odor (C1) <input type="checkbox"/> Oxidized Rhizospheres on Living Roots (C3) <input type="checkbox"/> Presence of Reduced Iron (C4) <input type="checkbox"/> Recent Iron Reduction in Tilled Soils (C6) <input type="checkbox"/> Thin Muck Surface (C7) <input type="checkbox"/> Gauge or Well Data (D9) <input type="checkbox"/> Other (Explain in Remarks)	<input type="checkbox"/> Surface Soil Cracks (B6) <input type="checkbox"/> Drainage Patterns (B10) <input type="checkbox"/> Dry-Season Water Table (C2) <input type="checkbox"/> Crayfish Burrows (C8) <input type="checkbox"/> Saturation Visible on Aerial Imagery (C9) <input type="checkbox"/> Stunted or Stressed Plants (D1) <input type="checkbox"/> Geomorphic Position (D2) <input type="checkbox"/> FAC-Neutral Test (D5)

Field Observations: Surface Water Present? Yes _____ No <input checked="" type="checkbox"/> Depth (inches): _____ Water Table Present? Yes _____ No <input checked="" type="checkbox"/> Depth (inches): _____ Saturation Present? Yes _____ No <input checked="" type="checkbox"/> Depth (inches): _____ (includes capillary fringe)	Wetland Hydrology Present? Yes _____ No <input checked="" type="checkbox"/>
---	---

Describe Recorded Data (stream gauge, monitoring well, aerial photos, previous inspections), if available:

Remarks:

WETLAND DETERMINATION DATA FORM – Midwest Region

Project/Site: Des. Number 2300695 I74/US231 Access Control City/County: Montgomery County Sampling Date: 2024-08-07
 Applicant/Owner: INDOT State: Indiana Sampling Point: DP5
 Investigator(s): L. Fehlman & C. Fraser Section, Township, Range: S17 T19N R4W
 Landform (hillslope, terrace, etc.): Ditch Local relief (concave, convex, none): Concave
 Slope (%): 0 Lat: 40.084617 Long: -86.903717 Datum: WGS 84
 Soil Map Unit Name: Mc - Mahalasville silty clay loam, gravelly substratum NWI classification: Non-Wetland

Are climatic / hydrologic conditions on the site typical for this time of year? Yes No (If no, explain in Remarks.)
 Are Vegetation , Soil , or Hydrology significantly disturbed? Are "Normal Circumstances" present? Yes No
 Are Vegetation , Soil , or Hydrology naturally problematic? (If needed, explain any answers in Remarks.)

SUMMARY OF FINDINGS – Attach site map showing sampling point locations, transects, important features, etc.

Hydrophytic Vegetation Present?	Yes <input type="checkbox"/>	No <input checked="" type="checkbox"/>	Is the Sampled Area within a Wetland? Yes <input type="checkbox"/> No <input checked="" type="checkbox"/>
Hydric Soil Present?	Yes <input type="checkbox"/>	No <input checked="" type="checkbox"/>	
Wetland Hydrology Present?	Yes <input type="checkbox"/>	No <input checked="" type="checkbox"/>	
Remarks:			

VEGETATION – Use scientific names of plants.

Tree Stratum (Plot size: <u>30 ft r</u>)	Absolute % Cover	Dominant Species?	Indicator Status	
1. _____	_____	_____	_____	
2. _____	_____	_____	_____	
3. _____	_____	_____	_____	
4. _____	_____	_____	_____	
5. _____	_____	_____	_____	
_____ = Total Cover				
Sapling/Shrub Stratum (Plot size: <u>15 ft r</u>)	Absolute % Cover	Dominant Species?	Indicator Status	
1. _____	_____	_____	_____	
2. _____	_____	_____	_____	
3. _____	_____	_____	_____	
4. _____	_____	_____	_____	
5. _____	_____	_____	_____	
_____ = Total Cover				
Herb Stratum (Plot size: <u>5 ft r</u>)	Absolute % Cover	Dominant Species?	Indicator Status	
1. <u>Ambrosia trifida</u>	<u>40</u>	<input checked="" type="checkbox"/>	<u>FAC</u>	
2. <u>Cirsium arvense</u>	<u>30</u>	<input checked="" type="checkbox"/>	<u>FACU</u>	
3. <u>Plantago lanceolata</u>	<u>10</u>	<input type="checkbox"/>	<u>FACU</u>	
4. <u>Erigeron canadensis</u>	<u>2</u>	<input type="checkbox"/>	<u>FACU</u>	
5. _____	_____	_____	_____	
6. _____	_____	_____	_____	
7. _____	_____	_____	_____	
8. _____	_____	_____	_____	
9. _____	_____	_____	_____	
10. _____	_____	_____	_____	
<u>82</u> = Total Cover				
Woody Vine Stratum (Plot size: <u>30 ft r</u>)	Absolute % Cover	Dominant Species?	Indicator Status	
1. _____	_____	_____	_____	
2. _____	_____	_____	_____	
_____ = Total Cover				

Dominance Test worksheet:
 Number of Dominant Species That Are OBL, FACW, or FAC: 1 (A)
 Total Number of Dominant Species Across All Strata: 2 (B)
 Percent of Dominant Species That Are OBL, FACW, or FAC: 50.00 (A/B)

Prevalence Index worksheet:
 Total % Cover of: Multiply by:
 OBL species 0 x 1 = 0
 FACW species 0 x 2 = 0
 FAC species 40 x 3 = 120
 FACU species 42 x 4 = 168
 UPL species 0 x 5 = 0
 Column Totals: 82 (A) 288 (B)
 Prevalence Index = B/A = 3.51

Hydrophytic Vegetation Indicators:
 1 - Rapid Test for Hydrophytic Vegetation
 2 - Dominance Test is >50%
 3 - Prevalence Index is ≤3.0¹
 4 - Morphological Adaptations¹ (Provide supporting data in Remarks or on a separate sheet)
 Problematic Hydrophytic Vegetation¹ (Explain)

¹Indicators of hydric soil and wetland hydrology must be present, unless disturbed or problematic.

Hydrophytic Vegetation Present? Yes No

Remarks: (Include photo numbers here or on a separate sheet.)

SOIL

Sampling Point: DP5

Profile Description: (Describe to the depth needed to document the indicator or confirm the absence of indicators.)								
Depth (inches)	Matrix		Redox Features				Texture	Remarks
	Color (moist)	%	Color (moist)	%	Type ¹	Loc ²		
0 - 8	10YR 3/1	100					Silty Clay Loam	
8 - 20								100% Fill
-								
-								
-								
-								
-								

¹Type: C=Concentration, D=Depletion, RM=Reduced Matrix, MS=Masked Sand Grains. ²Location: PL=Pore Lining, M=Matrix.

Hydric Soil Indicators: <input type="checkbox"/> Histosol (A1) <input type="checkbox"/> Histic Epipedon (A2) <input type="checkbox"/> Black Histic (A3) <input type="checkbox"/> Hydrogen Sulfide (A4) <input type="checkbox"/> Stratified Layers (A5) <input type="checkbox"/> 2 cm Muck (A10) <input type="checkbox"/> Depleted Below Dark Surface (A11) <input type="checkbox"/> Thick Dark Surface (A12) <input type="checkbox"/> Sandy Mucky Mineral (S1) <input type="checkbox"/> 5 cm Mucky Peat or Peat (S3)	Indicators for Problematic Hydric Soils³: <input type="checkbox"/> Sandy Gleyed Matrix (S4) <input type="checkbox"/> Sandy Redox (S5) <input type="checkbox"/> Stripped Matrix (S6) <input type="checkbox"/> Loamy Mucky Mineral (F1) <input type="checkbox"/> Loamy Gleyed Matrix (F2) <input type="checkbox"/> Depleted Matrix (F3) <input type="checkbox"/> Redox Dark Surface (F6) <input type="checkbox"/> Depleted Dark Surface (F7) <input type="checkbox"/> Redox Depressions (F8) <input type="checkbox"/> Coast Prairie Redox (A16) <input type="checkbox"/> Dark Surface (S7) <input type="checkbox"/> Iron-Manganese Masses (F12) <input type="checkbox"/> Very Shallow Dark Surface (TF12) <input type="checkbox"/> Other (Explain in Remarks)
---	---

³Indicators of hydrophytic vegetation and wetland hydrology must be present, unless disturbed or problematic.

Restrictive Layer (if observed): Type: _____ Depth (inches): _____	Hydric Soil Present? Yes _____ No <input checked="" type="checkbox"/>
---	---

Remarks:
100% Fill mixture begins at 8" below ground level

HYDROLOGY

Wetland Hydrology Indicators:		
Primary Indicators (minimum of one is required: check all that apply)	Secondary Indicators (minimum of two required)	
<input type="checkbox"/> Surface Water (A1) <input type="checkbox"/> High Water Table (A2) <input type="checkbox"/> Saturation (A3) <input type="checkbox"/> Water Marks (B1) <input type="checkbox"/> Sediment Deposits (B2) <input type="checkbox"/> Drift Deposits (B3) <input type="checkbox"/> Algal Mat or Crust (B4) <input type="checkbox"/> Iron Deposits (B5) <input type="checkbox"/> Inundation Visible on Aerial Imagery (B7) <input type="checkbox"/> Sparsely Vegetated Concave Surface (B8)	<input type="checkbox"/> Water-Stained Leaves (B9) <input type="checkbox"/> Aquatic Fauna (B13) <input type="checkbox"/> True Aquatic Plants (B14) <input type="checkbox"/> Hydrogen Sulfide Odor (C1) <input type="checkbox"/> Oxidized Rhizospheres on Living Roots (C3) <input type="checkbox"/> Presence of Reduced Iron (C4) <input type="checkbox"/> Recent Iron Reduction in Tilled Soils (C6) <input type="checkbox"/> Thin Muck Surface (C7) <input type="checkbox"/> Gauge or Well Data (D9) <input type="checkbox"/> Other (Explain in Remarks)	<input type="checkbox"/> Surface Soil Cracks (B6) <input type="checkbox"/> Drainage Patterns (B10) <input type="checkbox"/> Dry-Season Water Table (C2) <input type="checkbox"/> Crayfish Burrows (C8) <input type="checkbox"/> Saturation Visible on Aerial Imagery (C9) <input type="checkbox"/> Stunted or Stressed Plants (D1) <input checked="" type="checkbox"/> Geomorphic Position (D2) <input type="checkbox"/> FAC-Neutral Test (D5)
Field Observations: Surface Water Present? Yes _____ No <input checked="" type="checkbox"/> Depth (inches): _____ Water Table Present? Yes _____ No <input checked="" type="checkbox"/> Depth (inches): _____ Saturation Present? Yes _____ No <input checked="" type="checkbox"/> Depth (inches): _____ (includes capillary fringe)		Wetland Hydrology Present? Yes _____ No <input checked="" type="checkbox"/>
Describe Recorded Data (stream gauge, monitoring well, aerial photos, previous inspections), if available:		
Remarks:		

WETLAND DETERMINATION DATA FORM – Midwest Region

Project/Site: Des. Number 2300695 I74/US231 Access Control City/County: Montgomery County Sampling Date: 2024-08-07
 Applicant/Owner: INDOT State: Indiana Sampling Point: DP6
 Investigator(s): L. Fehlman & C. Fraser Section, Township, Range: S17 T19N R4W
 Landform (hillslope, terrace, etc.): Ditch Local relief (concave, convex, none): Concave
 Slope (%): 0 Lat: 40.084698 Long: -86.903715 Datum: WGS 84
 Soil Map Unit Name: Mc - Mahalasville silty clay loam, gravelly substratum NWI classification: Non-Wetland

Are climatic / hydrologic conditions on the site typical for this time of year? Yes No (If no, explain in Remarks.)
 Are Vegetation , Soil , or Hydrology significantly disturbed? Are "Normal Circumstances" present? Yes No
 Are Vegetation , Soil , or Hydrology naturally problematic? (If needed, explain any answers in Remarks.)

SUMMARY OF FINDINGS – Attach site map showing sampling point locations, transects, important features, etc.

Hydrophytic Vegetation Present? Yes <input checked="" type="checkbox"/> No <input type="checkbox"/> Hydric Soil Present? Yes <input checked="" type="checkbox"/> No <input type="checkbox"/> Wetland Hydrology Present? Yes <input checked="" type="checkbox"/> No <input type="checkbox"/>	Is the Sampled Area within a Wetland? Yes <input checked="" type="checkbox"/> No <input type="checkbox"/>
Remarks:	

VEGETATION – Use scientific names of plants.

Tree Stratum (Plot size: <u>30 ft r</u>)	Absolute % Cover	Dominant Species?	Indicator Status	
1. _____				
2. _____				
3. _____				
4. _____				
5. _____				
_____ = Total Cover				
Sapling/Shrub Stratum (Plot size: <u>15 ft r</u>)	Absolute % Cover	Dominant Species?	Indicator Status	
1. _____				
2. _____				
3. _____				
4. _____				
5. _____				
_____ = Total Cover				
Herb Stratum (Plot size: <u>5 ft r</u>)	Absolute % Cover	Dominant Species?	Indicator Status	
1. <u>Carex frankii</u>	<u>50</u>	<input checked="" type="checkbox"/>	<u>OBL</u>	
2. <u>Cirsium arvense</u>	<u>10</u>		<u>FACU</u>	
3. <u>Carex vulpinoidea</u>	<u>10</u>		<u>FACW</u>	
4. <u>Scirpus tabernaemontani</u>	<u>5</u>		<u>OBL</u>	
5. <u>Coronilla varia</u>	<u>2</u>		<u>UPL</u>	
6. _____				
7. _____				
8. _____				
9. _____				
10. _____				
<u>77</u> = Total Cover				
Woody Vine Stratum (Plot size: <u>30 ft r</u>)	Absolute % Cover	Dominant Species?	Indicator Status	
1. _____				
2. _____				
_____ = Total Cover				

Dominance Test worksheet:
 Number of Dominant Species That Are OBL, FACW, or FAC: 1 (A)
 Total Number of Dominant Species Across All Strata: 1 (B)
 Percent of Dominant Species That Are OBL, FACW, or FAC: 100.00 (A/B)

Prevalence Index worksheet:
 Total % Cover of: Multiply by:
 OBL species 55 x 1 = 55
 FACW species 10 x 2 = 20
 FAC species 0 x 3 = 0
 FACU species 10 x 4 = 40
 UPL species 2 x 5 = 10
 Column Totals: 77 (A) 125 (B)
 Prevalence Index = B/A = 1.62

Hydrophytic Vegetation Indicators:
 1 - Rapid Test for Hydrophytic Vegetation
 2 - Dominance Test is >50%
 3 - Prevalence Index is ≤3.0¹
 4 - Morphological Adaptations¹ (Provide supporting data in Remarks or on a separate sheet)
 Problematic Hydrophytic Vegetation¹ (Explain)

¹Indicators of hydric soil and wetland hydrology must be present, unless disturbed or problematic.

Hydrophytic Vegetation Present? Yes No

Remarks: (Include photo numbers here or on a separate sheet.)

WETLAND DETERMINATION DATA FORM – Midwest Region

Project/Site: Des. Number 2300695 I74/US231 Access Control City/County: Montgomery County Sampling Date: 2024-08-07
 Applicant/Owner: INDOT State: Indiana Sampling Point: DP7
 Investigator(s): L. Fehlman & C. Fraser Section, Township, Range: S18 T19N R4W
 Landform (hillslope, terrace, etc.): Ditch Local relief (concave, convex, none): Concave
 Slope (%): 0 Lat: 40.086227 Long: -86.904267 Datum: WGS 84
 Soil Map Unit Name: Mc - Mahalasville silty clay loam, gravelly substratum NWI classification: Non-Wetland

Are climatic / hydrologic conditions on the site typical for this time of year? Yes No (If no, explain in Remarks.)
 Are Vegetation , Soil , or Hydrology significantly disturbed? Are "Normal Circumstances" present? Yes No
 Are Vegetation , Soil , or Hydrology naturally problematic? (If needed, explain any answers in Remarks.)

SUMMARY OF FINDINGS – Attach site map showing sampling point locations, transects, important features, etc.

Hydrophytic Vegetation Present? Yes <input checked="" type="checkbox"/> No <input type="checkbox"/> Hydric Soil Present? Yes <input checked="" type="checkbox"/> No <input type="checkbox"/> Wetland Hydrology Present? Yes <input checked="" type="checkbox"/> No <input type="checkbox"/>	Is the Sampled Area within a Wetland? Yes <input checked="" type="checkbox"/> No <input type="checkbox"/>
Remarks:	

VEGETATION – Use scientific names of plants.

Tree Stratum (Plot size: <u>30 ft r</u>)	Absolute % Cover	Dominant Species?	Indicator Status	Dominance Test worksheet:
1. _____	_____	_____	_____	Number of Dominant Species That Are OBL, FACW, or FAC: <u>1</u> (A) Total Number of Dominant Species Across All Strata: <u>1</u> (B) Percent of Dominant Species That Are OBL, FACW, or FAC: <u>100.00</u> (A/B)
2. _____	_____	_____	_____	
3. _____	_____	_____	_____	
4. _____	_____	_____	_____	
5. _____	_____	_____	_____	
_____ = Total Cover				Prevalence Index worksheet: Total % Cover of: _____ Multiply by: _____ OBL species <u>2</u> x 1 = <u>2</u> FACW species <u>100</u> x 2 = <u>200</u> FAC species <u>0</u> x 3 = <u>0</u> FACU species <u>0</u> x 4 = <u>0</u> UPL species <u>0</u> x 5 = <u>0</u> Column Totals: <u>102</u> (A) <u>202</u> (B) Prevalence Index = B/A = <u>1.98</u>
Sapling/Shrub Stratum (Plot size: <u>15 ft r</u>)				
1. _____	_____	_____	_____	
2. _____	_____	_____	_____	
3. _____	_____	_____	_____	
_____ = Total Cover				
Herb Stratum (Plot size: <u>5 ft r</u>)				
1. <u>Phalaris arundinacea</u>	<u>100</u>	<input checked="" type="checkbox"/>	<u>FACW</u>	
2. <u>Lemna minor</u>	<u>2</u>		<u>OBL</u>	
3. _____	_____	_____	_____	
4. _____	_____	_____	_____	
5. _____	_____	_____	_____	
6. _____	_____	_____	_____	
7. _____	_____	_____	_____	
8. _____	_____	_____	_____	
9. _____	_____	_____	_____	
10. _____	_____	_____	_____	
<u>102</u> = Total Cover				
Woody Vine Stratum (Plot size: <u>30 ft r</u>)				
1. _____	_____	_____	_____	
2. _____	_____	_____	_____	
_____ = Total Cover				
Remarks: (Include photo numbers here or on a separate sheet.)				

SOIL

Sampling Point: DP7

Profile Description: (Describe to the depth needed to document the indicator or confirm the absence of indicators.)								
Depth (inches)	Matrix		Redox Features				Texture	Remarks
	Color (moist)	%	Color (moist)	%	Type ¹	Loc ²		
0 - 3	10YR 2/1	100					Muck	High organic matter
3 - 16	10YR 3/1	98	7.5YR 4/6	2	C	M	Silty Clay	20% Fill; organic matter present
-								
-								
-								
-								
-								

¹Type: C=Concentration, D=Depletion, RM=Reduced Matrix, MS=Masked Sand Grains. ²Location: PL=Pore Lining, M=Matrix.

Hydric Soil Indicators: <input type="checkbox"/> Histosol (A1) <input type="checkbox"/> Histic Epipedon (A2) <input type="checkbox"/> Black Histic (A3) <input type="checkbox"/> Hydrogen Sulfide (A4) <input type="checkbox"/> Stratified Layers (A5) <input checked="" type="checkbox"/> 2 cm Muck (A10) <input type="checkbox"/> Depleted Below Dark Surface (A11) <input type="checkbox"/> Thick Dark Surface (A12) <input type="checkbox"/> Sandy Mucky Mineral (S1) <input type="checkbox"/> 5 cm Mucky Peat or Peat (S3)	Indicators for Problematic Hydric Soils³: <input type="checkbox"/> Sandy Gleyed Matrix (S4) <input type="checkbox"/> Sandy Redox (S5) <input type="checkbox"/> Stripped Matrix (S6) <input type="checkbox"/> Loamy Mucky Mineral (F1) <input type="checkbox"/> Loamy Gleyed Matrix (F2) <input type="checkbox"/> Depleted Matrix (F3) <input checked="" type="checkbox"/> Redox Dark Surface (F6) <input type="checkbox"/> Depleted Dark Surface (F7) <input type="checkbox"/> Redox Depressions (F8) <input type="checkbox"/> Coast Prairie Redox (A16) <input type="checkbox"/> Dark Surface (S7) <input type="checkbox"/> Iron-Manganese Masses (F12) <input type="checkbox"/> Very Shallow Dark Surface (TF12) <input type="checkbox"/> Other (Explain in Remarks)
--	--

³Indicators of hydrophytic vegetation and wetland hydrology must be present, unless disturbed or problematic.

Restrictive Layer (if observed): Type: _____ Depth (inches): _____	Hydric Soil Present? Yes <input checked="" type="checkbox"/> No _____
---	--

Remarks:

HYDROLOGY

Wetland Hydrology Indicators:		
Primary Indicators (minimum of one is required: check all that apply)	Secondary Indicators (minimum of two required)	
<input type="checkbox"/> Surface Water (A1) <input checked="" type="checkbox"/> High Water Table (A2) <input checked="" type="checkbox"/> Saturation (A3) <input type="checkbox"/> Water Marks (B1) <input type="checkbox"/> Sediment Deposits (B2) <input type="checkbox"/> Drift Deposits (B3) <input type="checkbox"/> Algal Mat or Crust (B4) <input type="checkbox"/> Iron Deposits (B5) <input type="checkbox"/> Inundation Visible on Aerial Imagery (B7) <input type="checkbox"/> Sparsely Vegetated Concave Surface (B8)	<input type="checkbox"/> Water-Stained Leaves (B9) <input type="checkbox"/> Aquatic Fauna (B13) <input checked="" type="checkbox"/> True Aquatic Plants (B14) <input type="checkbox"/> Hydrogen Sulfide Odor (C1) <input type="checkbox"/> Oxidized Rhizospheres on Living Roots (C3) <input type="checkbox"/> Presence of Reduced Iron (C4) <input type="checkbox"/> Recent Iron Reduction in Tilled Soils (C6) <input type="checkbox"/> Thin Muck Surface (C7) <input type="checkbox"/> Gauge or Well Data (D9) <input type="checkbox"/> Other (Explain in Remarks)	<input type="checkbox"/> Surface Soil Cracks (B6) <input type="checkbox"/> Drainage Patterns (B10) <input type="checkbox"/> Dry-Season Water Table (C2) <input checked="" type="checkbox"/> Crayfish Burrows (C8) <input checked="" type="checkbox"/> Saturation Visible on Aerial Imagery (C9) <input type="checkbox"/> Stunted or Stressed Plants (D1) <input checked="" type="checkbox"/> Geomorphic Position (D2) <input checked="" type="checkbox"/> FAC-Neutral Test (D5)
Field Observations: Surface Water Present? Yes _____ No <input checked="" type="checkbox"/> Depth (inches): _____ Water Table Present? Yes <input checked="" type="checkbox"/> No _____ Depth (inches): <u>5</u> Saturation Present? Yes <input checked="" type="checkbox"/> No _____ Depth (inches): <u>0</u> (includes capillary fringe)		Wetland Hydrology Present? Yes <input checked="" type="checkbox"/> No _____
Describe Recorded Data (stream gauge, monitoring well, aerial photos, previous inspections), if available:		
Remarks:		

WETLAND DETERMINATION DATA FORM – Midwest Region

Project/Site: Des. Number 2300695 I74/US231 Access Control City/County: Montgomery County Sampling Date: 2024-09-06
 Applicant/Owner: INDOT State: Indiana Sampling Point: DP8
 Investigator(s): L. Fehlman & C. Fraser Section, Township, Range: S18 T19N R4W
 Landform (hillslope, terrace, etc.): Ditch Local relief (concave, convex, none): Concave
 Slope (%): 0.5 Lat: 40.086227 Long: -86.904228 Datum: WGS 84
 Soil Map Unit Name: Mc - Mahalasville silty clay loam, gravelly substratum NWI classification: Non-Wetland

Are climatic / hydrologic conditions on the site typical for this time of year? Yes No (If no, explain in Remarks.)
 Are Vegetation , Soil , or Hydrology significantly disturbed? Are "Normal Circumstances" present? Yes No
 Are Vegetation , Soil , or Hydrology naturally problematic? (If needed, explain any answers in Remarks.)

SUMMARY OF FINDINGS – Attach site map showing sampling point locations, transects, important features, etc.

Hydrophytic Vegetation Present? Yes <input type="checkbox"/> No <input checked="" type="checkbox"/> Hydric Soil Present? Yes <input type="checkbox"/> No <input checked="" type="checkbox"/> Wetland Hydrology Present? Yes <input type="checkbox"/> No <input checked="" type="checkbox"/>	Is the Sampled Area within a Wetland? Yes <input type="checkbox"/> No <input checked="" type="checkbox"/>
Remarks:	

VEGETATION – Use scientific names of plants.

Tree Stratum (Plot size: <u>30 ft r</u>)	Absolute % Cover	Dominant Species?	Indicator Status	
1. _____	_____	_____	_____	
2. _____	_____	_____	_____	
3. _____	_____	_____	_____	
4. _____	_____	_____	_____	
5. _____	_____	_____	_____	
_____ = Total Cover				
Sapling/Shrub Stratum (Plot size: <u>15 ft r</u>)	Absolute % Cover	Dominant Species?	Indicator Status	
1. <u>Cornus racemosa</u>	<u>20</u>	<input checked="" type="checkbox"/>	<u>FAC</u>	
2. <u>Lonicera maackii</u>	<u>15</u>	<input checked="" type="checkbox"/>	<u>UPL</u>	
3. _____	_____	_____	_____	
4. _____	_____	_____	_____	
5. _____	_____	_____	_____	
_____ = Total Cover				
Herb Stratum (Plot size: <u>5 ft r</u>)	Absolute % Cover	Dominant Species?	Indicator Status	
1. <u>Poa pratensis</u>	<u>70</u>	<input checked="" type="checkbox"/>	<u>FAC</u>	
2. <u>Festuca rubra</u>	<u>30</u>	<input checked="" type="checkbox"/>	<u>FACU</u>	
3. <u>Phalaris arundinacea</u>	<u>10</u>	_____	<u>FACW</u>	
4. <u>Anemone virginiana</u>	<u>10</u>	_____	<u>FACU</u>	
5. <u>Daucus carota</u>	<u>5</u>	_____	<u>UPL</u>	
6. <u>Vernonia fasciculata</u>	<u>1</u>	_____	<u>FACW</u>	
7. _____	_____	_____	_____	
8. _____	_____	_____	_____	
9. _____	_____	_____	_____	
10. _____	_____	_____	_____	
_____ = Total Cover				
Woody Vine Stratum (Plot size: <u>30 ft r</u>)	Absolute % Cover	Dominant Species?	Indicator Status	
1. _____	_____	_____	_____	
2. _____	_____	_____	_____	
_____ = Total Cover				

Dominance Test worksheet:
 Number of Dominant Species That Are OBL, FACW, or FAC: 2 (A)
 Total Number of Dominant Species Across All Strata: 4 (B)
 Percent of Dominant Species That Are OBL, FACW, or FAC: 50.00 (A/B)

Prevalence Index worksheet:
 Total % Cover of: _____ Multiply by: _____
 OBL species 0 x 1 = 0
 FACW species 11 x 2 = 22
 FAC species 90 x 3 = 270
 FACU species 40 x 4 = 160
 UPL species 20 x 5 = 100
 Column Totals: 161 (A) 552 (B)
 Prevalence Index = B/A = 3.42

Hydrophytic Vegetation Indicators:
 1 - Rapid Test for Hydrophytic Vegetation
 2 - Dominance Test is >50%
 3 - Prevalence Index is ≤3.0¹
 4 - Morphological Adaptations¹ (Provide supporting data in Remarks or on a separate sheet)
 Problematic Hydrophytic Vegetation¹ (Explain)

¹Indicators of hydric soil and wetland hydrology must be present, unless disturbed or problematic.

Remarks: (Include photo numbers here or on a separate sheet.) _____ _____	Hydrophytic Vegetation Present? Yes <input type="checkbox"/> No <input checked="" type="checkbox"/>
---	---

SOIL

Sampling Point: DP8

Profile Description: (Describe to the depth needed to document the indicator or confirm the absence of indicators.)								
Depth (inches)	Matrix		Redox Features				Texture	Remarks
	Color (moist)	%	Color (moist)	%	Type ¹	Loc ²		
0 - 20	10YR 4/2	100					Silt	Plant roots; 60% Fill Mix
-								
-								
-								
-								
-								
-								
-								
-								
-								
¹ Type: C=Concentration, D=Depletion, RM=Reduced Matrix, MS=Masked Sand Grains.					² Location: PL=Pore Lining, M=Matrix.			
Hydric Soil Indicators:						Indicators for Problematic Hydric Soils³:		
<input type="checkbox"/> Histosol (A1) <input type="checkbox"/> Histic Epipedon (A2) <input type="checkbox"/> Black Histic (A3) <input type="checkbox"/> Hydrogen Sulfide (A4) <input type="checkbox"/> Stratified Layers (A5) <input type="checkbox"/> 2 cm Muck (A10) <input type="checkbox"/> Depleted Below Dark Surface (A11) <input type="checkbox"/> Thick Dark Surface (A12) <input type="checkbox"/> Sandy Mucky Mineral (S1) <input type="checkbox"/> 5 cm Mucky Peat or Peat (S3)			<input type="checkbox"/> Sandy Gleyed Matrix (S4) <input type="checkbox"/> Sandy Redox (S5) <input type="checkbox"/> Stripped Matrix (S6) <input type="checkbox"/> Loamy Mucky Mineral (F1) <input type="checkbox"/> Loamy Gleyed Matrix (F2) <input type="checkbox"/> Depleted Matrix (F3) <input type="checkbox"/> Redox Dark Surface (F6) <input type="checkbox"/> Depleted Dark Surface (F7) <input type="checkbox"/> Redox Depressions (F8)			<input type="checkbox"/> Coast Prairie Redox (A16) <input type="checkbox"/> Dark Surface (S7) <input type="checkbox"/> Iron-Manganese Masses (F12) <input type="checkbox"/> Very Shallow Dark Surface (TF12) <input type="checkbox"/> Other (Explain in Remarks)		
Restrictive Layer (if observed):								
Type: _____								
Depth (Inches): _____						Hydric Soil Present? Yes _____ No <input checked="" type="checkbox"/>		
Remarks:								

HYDROLOGY

Wetland Hydrology Indicators:		
Primary Indicators (minimum of one is required: check all that apply)	Secondary Indicators (minimum of two required)	
<input type="checkbox"/> Surface Water (A1) <input type="checkbox"/> High Water Table (A2) <input type="checkbox"/> Saturation (A3) <input type="checkbox"/> Water Marks (B1) <input type="checkbox"/> Sediment Deposits (B2) <input type="checkbox"/> Drift Deposits (B3) <input type="checkbox"/> Algal Mat or Crust (B4) <input type="checkbox"/> Iron Deposits (B5) <input type="checkbox"/> Inundation Visible on Aerial Imagery (B7) <input type="checkbox"/> Sparsely Vegetated Concave Surface (B8)	<input type="checkbox"/> Water-Stained Leaves (B9) <input type="checkbox"/> Aquatic Fauna (B13) <input type="checkbox"/> True Aquatic Plants (B14) <input type="checkbox"/> Hydrogen Sulfide Odor (C1) <input type="checkbox"/> Oxidized Rhizospheres on Living Roots (C3) <input type="checkbox"/> Presence of Reduced Iron (C4) <input type="checkbox"/> Recent Iron Reduction in Tilled Soils (C6) <input type="checkbox"/> Thin Muck Surface (C7) <input type="checkbox"/> Gauge or Well Data (D9) <input type="checkbox"/> Other (Explain in Remarks)	<input type="checkbox"/> Surface Soil Cracks (B6) <input type="checkbox"/> Drainage Patterns (B10) <input type="checkbox"/> Dry-Season Water Table (C2) <input type="checkbox"/> Crayfish Burrows (C8) <input type="checkbox"/> Saturation Visible on Aerial Imagery (C9) <input type="checkbox"/> Stunted or Stressed Plants (D1) <input type="checkbox"/> Geomorphic Position (D2) <input type="checkbox"/> FAC-Neutral Test (D5)
Field Observations:		
Surface Water Present? Yes _____ No <input checked="" type="checkbox"/>	Depth (inches): _____	
Water Table Present? Yes _____ No <input checked="" type="checkbox"/>	Depth (inches): _____	
Saturation Present? Yes _____ No <input checked="" type="checkbox"/> (includes capillary fringe)	Depth (inches): _____	Wetland Hydrology Present? Yes _____ No <input checked="" type="checkbox"/>
Describe Recorded Data (stream gauge, monitoring well, aerial photos, previous inspections), if available:		
Remarks:		

WETLAND DETERMINATION DATA FORM – Midwest Region

Project/Site: Des. Number 2300695 I74/US231 Access Control City/County: Montgomery County Sampling Date: 2024-08-07
 Applicant/Owner: INDOT State: Indiana Sampling Point: DP9
 Investigator(s): L. Fehlman & C. Fraser Section, Township, Range: S18 T19N R4W
 Landform (hillslope, terrace, etc.): Ditch Local relief (concave, convex, none): Concave
 Slope (%): 0 Lat: 40.085546 Long: -86.904254 Datum: WGS 84
 Soil Map Unit Name: Mc - Mahalasville silty clay loam, gravelly substratum NWI classification: Non-Wetland

Are climatic / hydrologic conditions on the site typical for this time of year? Yes No (If no, explain in Remarks.)
 Are Vegetation , Soil , or Hydrology significantly disturbed? Are "Normal Circumstances" present? Yes No
 Are Vegetation , Soil , or Hydrology naturally problematic? (If needed, explain any answers in Remarks.)

SUMMARY OF FINDINGS – Attach site map showing sampling point locations, transects, important features, etc.

Hydrophytic Vegetation Present? Yes <input type="checkbox"/> No <input checked="" type="checkbox"/> Hydric Soil Present? Yes <input type="checkbox"/> No <input checked="" type="checkbox"/> Wetland Hydrology Present? Yes <input type="checkbox"/> No <input checked="" type="checkbox"/>	Is the Sampled Area within a Wetland? Yes <input type="checkbox"/> No <input checked="" type="checkbox"/>
Remarks:	

VEGETATION – Use scientific names of plants.

Tree Stratum (Plot size: <u>30 ft r</u>)	Absolute % Cover	Dominant Species?	Indicator Status	
1. _____	_____	_____	_____	
2. _____	_____	_____	_____	
3. _____	_____	_____	_____	
4. _____	_____	_____	_____	
5. _____	_____	_____	_____	
_____ = Total Cover				
Sapling/Shrub Stratum (Plot size: <u>15 ft r</u>)	Absolute % Cover	Dominant Species?	Indicator Status	
1. <u>Juniperus virginiana</u>	<u>25</u>	<input checked="" type="checkbox"/>	<u>FACU</u>	
2. <u>Salix interior</u>	<u>20</u>	<input checked="" type="checkbox"/>	<u>FACW</u>	
3. <u>Lonicera maackii</u>	<u>20</u>	<input checked="" type="checkbox"/>	<u>UPL</u>	
4. <u>Morus alba</u>	<u>10</u>	_____	<u>FAC</u>	
5. _____	_____	_____	_____	
_____ = Total Cover				
Herb Stratum (Plot size: <u>5 ft r</u>)	Absolute % Cover	Dominant Species?	Indicator Status	
1. <u>Festuca rubra</u>	<u>40</u>	<input checked="" type="checkbox"/>	<u>FACU</u>	
2. <u>Daucus carota</u>	<u>10</u>	_____	<u>UPL</u>	
3. <u>Lonicera maackii</u>	<u>10</u>	_____	<u>UPL</u>	
4. <u>Salix interior</u>	<u>5</u>	_____	<u>FACW</u>	
5. <u>Eupatorium perfoliatum</u>	<u>5</u>	_____	<u>OBL</u>	
6. _____	_____	_____	_____	
7. _____	_____	_____	_____	
8. _____	_____	_____	_____	
9. _____	_____	_____	_____	
10. _____	_____	_____	_____	
_____ = Total Cover				
Woody Vine Stratum (Plot size: <u>30 ft r</u>)	Absolute % Cover	Dominant Species?	Indicator Status	
1. _____	_____	_____	_____	
2. _____	_____	_____	_____	
_____ = Total Cover				

Dominance Test worksheet:
 Number of Dominant Species That Are OBL, FACW, or FAC: 1 (A)
 Total Number of Dominant Species Across All Strata: 4 (B)
 Percent of Dominant Species That Are OBL, FACW, or FAC: 25.00 (A/B)

Prevalence Index worksheet:
 Total % Cover of: _____ Multiply by: _____
 OBL species 5 x 1 = 5
 FACW species 25 x 2 = 50
 FAC species 10 x 3 = 30
 FACU species 65 x 4 = 260
 UPL species 40 x 5 = 200
 Column Totals: 145 (A) 545 (B)
 Prevalence Index = B/A = 3.75

Hydrophytic Vegetation Indicators:
 1 - Rapid Test for Hydrophytic Vegetation
 2 - Dominance Test is >50%
 3 - Prevalence Index is ≤3.0¹
 4 - Morphological Adaptations¹ (Provide supporting data in Remarks or on a separate sheet)
 Problematic Hydrophytic Vegetation¹ (Explain)

¹Indicators of hydric soil and wetland hydrology must be present, unless disturbed or problematic.

Hydrophytic Vegetation Present?	Yes <input type="checkbox"/>	No <input checked="" type="checkbox"/>
--	------------------------------	--

Remarks: (Include photo numbers here or on a separate sheet.)

SOIL

Sampling Point: DP9

Profile Description: (Describe to the depth needed to document the indicator or confirm the absence of indicators.)								
Depth (inches)	Matrix		Redox Features				Texture	Remarks
	Color (moist)	%	Color (moist)	%	Type ¹	Loc ²		
0 - 16	10YR 4/2	100					Silt Loam	90% Fill Mix
-								
-								
-								
-								
-								
-								
-								
-								

¹Type: C=Concentration, D=Depletion, RM=Reduced Matrix, MS=Masked Sand Grains. ²Location: PL=Pore Lining, M=Matrix.

Hydric Soil Indicators: <input type="checkbox"/> Histosol (A1) <input type="checkbox"/> Histic Epipedon (A2) <input type="checkbox"/> Black Histic (A3) <input type="checkbox"/> Hydrogen Sulfide (A4) <input type="checkbox"/> Stratified Layers (A5) <input type="checkbox"/> 2 cm Muck (A10) <input type="checkbox"/> Depleted Below Dark Surface (A11) <input type="checkbox"/> Thick Dark Surface (A12) <input type="checkbox"/> Sandy Mucky Mineral (S1) <input type="checkbox"/> 5 cm Mucky Peat or Peat (S3)	Indicators for Problematic Hydric Soils³: <input type="checkbox"/> Sandy Gleyed Matrix (S4) <input type="checkbox"/> Sandy Redox (S5) <input type="checkbox"/> Stripped Matrix (S6) <input type="checkbox"/> Loamy Mucky Mineral (F1) <input type="checkbox"/> Loamy Gleyed Matrix (F2) <input type="checkbox"/> Depleted Matrix (F3) <input type="checkbox"/> Redox Dark Surface (F6) <input type="checkbox"/> Depleted Dark Surface (F7) <input type="checkbox"/> Redox Depressions (F8) <input type="checkbox"/> Coast Prairie Redox (A16) <input type="checkbox"/> Dark Surface (S7) <input type="checkbox"/> Iron-Manganese Masses (F12) <input type="checkbox"/> Very Shallow Dark Surface (TF12) <input type="checkbox"/> Other (Explain in Remarks)
---	---

³Indicators of hydrophytic vegetation and wetland hydrology must be present, unless disturbed or problematic.

Restrictive Layer (if observed): Type: _____ Depth (inches): _____	Hydric Soil Present? Yes _____ No <input checked="" type="checkbox"/>
---	---

Remarks:

HYDROLOGY

Wetland Hydrology Indicators:		
Primary Indicators (minimum of one is required: check all that apply)	Secondary Indicators (minimum of two required)	
<input type="checkbox"/> Surface Water (A1) <input type="checkbox"/> High Water Table (A2) <input type="checkbox"/> Saturation (A3) <input type="checkbox"/> Water Marks (B1) <input type="checkbox"/> Sediment Deposits (B2) <input type="checkbox"/> Drift Deposits (B3) <input type="checkbox"/> Algal Mat or Crust (B4) <input type="checkbox"/> Iron Deposits (B5) <input type="checkbox"/> Inundation Visible on Aerial Imagery (B7) <input type="checkbox"/> Sparsely Vegetated Concave Surface (B8)	<input type="checkbox"/> Water-Stained Leaves (B9) <input type="checkbox"/> Aquatic Fauna (B13) <input type="checkbox"/> True Aquatic Plants (B14) <input type="checkbox"/> Hydrogen Sulfide Odor (C1) <input type="checkbox"/> Oxidized Rhizospheres on Living Roots (C3) <input type="checkbox"/> Presence of Reduced Iron (C4) <input type="checkbox"/> Recent Iron Reduction in Tilled Soils (C6) <input type="checkbox"/> Thin Muck Surface (C7) <input type="checkbox"/> Gauge or Well Data (D9) <input type="checkbox"/> Other (Explain in Remarks)	<input type="checkbox"/> Surface Soil Cracks (B6) <input type="checkbox"/> Drainage Patterns (B10) <input type="checkbox"/> Dry-Season Water Table (C2) <input type="checkbox"/> Crayfish Burrows (C8) <input type="checkbox"/> Saturation Visible on Aerial Imagery (C9) <input type="checkbox"/> Stunted or Stressed Plants (D1) <input checked="" type="checkbox"/> Geomorphic Position (D2) <input type="checkbox"/> FAC-Neutral Test (D5)
Field Observations: Surface Water Present? Yes _____ No <input checked="" type="checkbox"/> Depth (inches): _____ Water Table Present? Yes _____ No <input checked="" type="checkbox"/> Depth (inches): _____ Saturation Present? Yes _____ No <input checked="" type="checkbox"/> Depth (inches): _____ (includes capillary fringe)		Wetland Hydrology Present? Yes _____ No <input checked="" type="checkbox"/>
Describe Recorded Data (stream gauge, monitoring well, aerial photos, previous inspections), if available:		
Remarks:		

WETLAND DETERMINATION DATA FORM – Midwest Region

Project/Site: Des. Number 2300695 I74/US231 Access Control City/County: Montgomery County Sampling Date: 2024-09-06
 Applicant/Owner: INDOT State: Indiana Sampling Point: DP10
 Investigator(s): L. Fehlman & C. Fraser Section, Township, Range: S18 T19N R4W
 Landform (hillslope, terrace, etc.): Ditch Local relief (concave, convex, none): Concave
 Slope (%): 0.5 Lat: 40.083181 Long: -86.90414 Datum: WGS 84
 Soil Map Unit Name: WdA - Waynetown silt loam, 0 to 2 percent slopes NWI classification: Non-Wetland

Are climatic / hydrologic conditions on the site typical for this time of year? Yes No (If no, explain in Remarks.)
 Are Vegetation , Soil , or Hydrology significantly disturbed? Are "Normal Circumstances" present? Yes No
 Are Vegetation , Soil , or Hydrology naturally problematic? (If needed, explain any answers in Remarks.)

SUMMARY OF FINDINGS – Attach site map showing sampling point locations, transects, important features, etc.

Hydrophytic Vegetation Present? Yes <input checked="" type="checkbox"/> No <input type="checkbox"/> Hydric Soil Present? Yes <input checked="" type="checkbox"/> No <input type="checkbox"/> Wetland Hydrology Present? Yes <input checked="" type="checkbox"/> No <input type="checkbox"/>	Is the Sampled Area within a Wetland? Yes <input checked="" type="checkbox"/> No <input type="checkbox"/>
Remarks:	

VEGETATION – Use scientific names of plants.

Tree Stratum (Plot size: <u>30 ft r</u>)	Absolute % Cover	Dominant Species?	Indicator Status	
1. _____				
2. _____				
3. _____				
4. _____				
5. _____				
_____ = Total Cover				
Sapling/Shrub Stratum (Plot size: <u>15 ft r</u>)	Absolute % Cover	Dominant Species?	Indicator Status	
1. _____				
2. _____				
3. _____				
4. _____				
5. _____				
_____ = Total Cover				
Herb Stratum (Plot size: <u>5 ft r</u>)	Absolute % Cover	Dominant Species?	Indicator Status	
1. <u>Echinochloa muricata</u>	<u>30</u>	<input checked="" type="checkbox"/>	<u>OBL</u>	
2. <u>Festuca rubra</u>	<u>15</u>	<input checked="" type="checkbox"/>	<u>FACU</u>	
3. <u>Poa pratensis</u>	<u>15</u>	<input checked="" type="checkbox"/>	<u>FAC</u>	
4. _____				
5. _____				
6. _____				
7. _____				
8. _____				
9. _____				
10. _____				
<u>60</u> = Total Cover				
Woody Vine Stratum (Plot size: <u>30 ft r</u>)	Absolute % Cover	Dominant Species?	Indicator Status	
1. _____				
2. _____				
_____ = Total Cover				

Dominance Test worksheet:
 Number of Dominant Species That Are OBL, FACW, or FAC: 2 (A)
 Total Number of Dominant Species Across All Strata: 3 (B)
 Percent of Dominant Species That Are OBL, FACW, or FAC: 66.66 (A/B)

Prevalence Index worksheet:
 Total % Cover of: Multiply by:
 OBL species 30 x 1 = 30
 FACW species 0 x 2 = 0
 FAC species 15 x 3 = 45
 FACU species 15 x 4 = 60
 UPL species 0 x 5 = 0
 Column Totals: 60 (A) 135 (B)
 Prevalence Index = B/A = 2.25

Hydrophytic Vegetation Indicators:
 1 - Rapid Test for Hydrophytic Vegetation
 2 - Dominance Test is >50%
 3 - Prevalence Index is ≤3.0¹
 4 - Morphological Adaptations¹ (Provide supporting data in Remarks or on a separate sheet)
 Problematic Hydrophytic Vegetation¹ (Explain)

¹Indicators of hydric soil and wetland hydrology must be present, unless disturbed or problematic.

Hydrophytic Vegetation Present? Yes No

Remarks: (Include photo numbers here or on a separate sheet.)

SOIL

Sampling Point: DP10

Profile Description: (Describe to the depth needed to document the indicator or confirm the absence of indicators.)								
Depth (inches)	Matrix		Redox Features				Texture	Remarks
	Color (moist)	%	Color (moist)	%	Type ¹	Loc ²		
0 - 1	10YR 2/1	100					Muck	High organic matter
1 - 10	10YR 2/1	100					Clay	5% Brick mix
10 - 20	10YR 3/2	100					Silty Clay Loam	85% Fill
-								
-								
-								
-								

¹Type: C=Concentration, D=Depletion, RM=Reduced Matrix, MS=Masked Sand Grains. ²Location: PL=Pore Lining, M=Matrix.

Hydric Soil Indicators: <input type="checkbox"/> Histosol (A1) <input type="checkbox"/> Histic Epipedon (A2) <input type="checkbox"/> Black Histic (A3) <input type="checkbox"/> Hydrogen Sulfide (A4) <input type="checkbox"/> Stratified Layers (A5) <input checked="" type="checkbox"/> 2 cm Muck (A10) <input type="checkbox"/> Depleted Below Dark Surface (A11) <input type="checkbox"/> Thick Dark Surface (A12) <input type="checkbox"/> Sandy Mucky Mineral (S1) <input type="checkbox"/> 5 cm Mucky Peat or Peat (S3)	Indicators for Problematic Hydric Soils³: <input type="checkbox"/> Sandy Gleyed Matrix (S4) <input type="checkbox"/> Sandy Redox (S5) <input type="checkbox"/> Stripped Matrix (S6) <input type="checkbox"/> Loamy Mucky Mineral (F1) <input type="checkbox"/> Loamy Gleyed Matrix (F2) <input type="checkbox"/> Depleted Matrix (F3) <input type="checkbox"/> Redox Dark Surface (F6) <input type="checkbox"/> Depleted Dark Surface (F7) <input type="checkbox"/> Redox Depressions (F8) <input type="checkbox"/> Coast Prairie Redox (A16) <input type="checkbox"/> Dark Surface (S7) <input type="checkbox"/> Iron-Manganese Masses (F12) <input type="checkbox"/> Very Shallow Dark Surface (TF12) <input type="checkbox"/> Other (Explain in Remarks)
--	---

³Indicators of hydrophytic vegetation and wetland hydrology must be present, unless disturbed or problematic.

Restrictive Layer (if observed): Type: _____ Depth (inches): _____	Hydric Soil Present? Yes <input checked="" type="checkbox"/> No _____
---	--

Remarks:

HYDROLOGY

Wetland Hydrology Indicators:		
Primary Indicators (minimum of one is required: check all that apply)		Secondary Indicators (minimum of two required)
<input type="checkbox"/> Surface Water (A1)	<input type="checkbox"/> Water-Stained Leaves (B9)	<input type="checkbox"/> Surface Soil Cracks (B6)
<input type="checkbox"/> High Water Table (A2)	<input type="checkbox"/> Aquatic Fauna (B13)	<input type="checkbox"/> Drainage Patterns (B10)
<input checked="" type="checkbox"/> Saturation (A3)	<input type="checkbox"/> True Aquatic Plants (B14)	<input type="checkbox"/> Dry-Season Water Table (C2)
<input type="checkbox"/> Water Marks (B1)	<input type="checkbox"/> Hydrogen Sulfide Odor (C1)	<input checked="" type="checkbox"/> Crayfish Burrows (C8)
<input type="checkbox"/> Sediment Deposits (B2)	<input type="checkbox"/> Oxidized Rhizospheres on Living Roots (C3)	<input type="checkbox"/> Saturation Visible on Aerial Imagery (C9)
<input type="checkbox"/> Drift Deposits (B3)	<input type="checkbox"/> Presence of Reduced Iron (C4)	<input type="checkbox"/> Stunted or Stressed Plants (D1)
<input type="checkbox"/> Algal Mat or Crust (B4)	<input type="checkbox"/> Recent Iron Reduction in Tilled Soils (C6)	<input type="checkbox"/> Geomorphic Position (D2)
<input type="checkbox"/> Iron Deposits (B5)	<input type="checkbox"/> Thin Muck Surface (C7)	<input type="checkbox"/> FAC-Neutral Test (D5)
<input type="checkbox"/> Inundation Visible on Aerial Imagery (B7)	<input type="checkbox"/> Gauge or Well Data (D9)	
<input type="checkbox"/> Sparsely Vegetated Concave Surface (B8)	<input type="checkbox"/> Other (Explain in Remarks)	

Field Observations: Surface Water Present? Yes _____ No <input checked="" type="checkbox"/> Depth (inches): _____ Water Table Present? Yes <input checked="" type="checkbox"/> No _____ Depth (inches): <u>20</u> Saturation Present? Yes <input checked="" type="checkbox"/> No _____ Depth (inches): <u>0</u> (includes capillary fringe)	Wetland Hydrology Present? Yes <input checked="" type="checkbox"/> No _____
--	--

Describe Recorded Data (stream gauge, monitoring well, aerial photos, previous inspections), if available:

Remarks:

WETLAND DETERMINATION DATA FORM – Midwest Region

Project/Site: Des. Number 2300695 I74/US231 Access Control City/County: Montgomery County Sampling Date: 2024-08-07
 Applicant/Owner: INDOT State: Indiana Sampling Point: DP11
 Investigator(s): L. Fehlman & C. Fraser Section, Township, Range: S18 T19N R4W
 Landform (hillslope, terrace, etc.): Ditch Local relief (concave, convex, none): Concave
 Slope (%): 0.5 Lat: 40.083178 Long: -86.904132 Datum: WGS 84
 Soil Map Unit Name: WdA - Waynetown silt loam, 0 to 2 percent slopes NWI classification: Non-Wetland

Are climatic / hydrologic conditions on the site typical for this time of year? Yes No (If no, explain in Remarks.)
 Are Vegetation , Soil , or Hydrology significantly disturbed? Are "Normal Circumstances" present? Yes No
 Are Vegetation , Soil , or Hydrology naturally problematic? (If needed, explain any answers in Remarks.)

SUMMARY OF FINDINGS – Attach site map showing sampling point locations, transects, important features, etc.

Hydrophytic Vegetation Present?	Yes <input type="checkbox"/>	No <input checked="" type="checkbox"/>	Is the Sampled Area within a Wetland? Yes <input type="checkbox"/> No <input checked="" type="checkbox"/>
Hydric Soil Present?	Yes <input checked="" type="checkbox"/>	No <input type="checkbox"/>	
Wetland Hydrology Present?	Yes <input type="checkbox"/>	No <input checked="" type="checkbox"/>	
Remarks:			

VEGETATION – Use scientific names of plants.

Tree Stratum (Plot size: <u>30 ft r</u>)	Absolute % Cover	Dominant Species?	Indicator Status	
1. _____	_____	_____	_____	
2. _____	_____	_____	_____	
3. _____	_____	_____	_____	
4. _____	_____	_____	_____	
5. _____	_____	_____	_____	
_____ = Total Cover				
Sapling/Shrub Stratum (Plot size: <u>15 ft r</u>)	Absolute % Cover	Dominant Species?	Indicator Status	
1. _____	_____	_____	_____	
2. _____	_____	_____	_____	
3. _____	_____	_____	_____	
4. _____	_____	_____	_____	
5. _____	_____	_____	_____	
_____ = Total Cover				
Herb Stratum (Plot size: <u>5 ft r</u>)	Absolute % Cover	Dominant Species?	Indicator Status	
1. <u>Festuca rubra</u>	<u>99</u>	<input checked="" type="checkbox"/>	<u>FACU</u>	
2. <u>Apocynum cannabinum</u>	<u>1</u>	<input type="checkbox"/>	<u>FAC</u>	
3. _____	_____	_____	_____	
4. _____	_____	_____	_____	
5. _____	_____	_____	_____	
6. _____	_____	_____	_____	
7. _____	_____	_____	_____	
8. _____	_____	_____	_____	
9. _____	_____	_____	_____	
10. _____	_____	_____	_____	
<u>100</u> = Total Cover				
Woody Vine Stratum (Plot size: <u>30 ft r</u>)	Absolute % Cover	Dominant Species?	Indicator Status	
1. _____	_____	_____	_____	
2. _____	_____	_____	_____	
_____ = Total Cover				

Dominance Test worksheet:
 Number of Dominant Species That Are OBL, FACW, or FAC: 0 (A)
 Total Number of Dominant Species Across All Strata: 1 (B)
 Percent of Dominant Species That Are OBL, FACW, or FAC: 0.00 (A/B)

Prevalence Index worksheet:
 Total % Cover of: Multiply by:
 OBL species 0 x 1 = 0
 FACW species 0 x 2 = 0
 FAC species 1 x 3 = 3
 FACU species 99 x 4 = 396
 UPL species 0 x 5 = 0
 Column Totals: 100 (A) 399 (B)
 Prevalence Index = B/A = 3.99

Hydrophytic Vegetation Indicators:
 1 - Rapid Test for Hydrophytic Vegetation
 2 - Dominance Test is >50%
 3 - Prevalence Index is ≤3.0¹
 4 - Morphological Adaptations¹ (Provide supporting data in Remarks or on a separate sheet)
 Problematic Hydrophytic Vegetation¹ (Explain)

¹Indicators of hydric soil and wetland hydrology must be present, unless disturbed or problematic.

Hydrophytic Vegetation Present? Yes No

Remarks: (Include photo numbers here or on a separate sheet.)

SOIL

Sampling Point: DP11

Profile Description: (Describe to the depth needed to document the indicator or confirm the absence of indicators.)								
Depth (inches)	Matrix		Redox Features				Texture	Remarks
	Color (moist)	%	Color (moist)	%	Type ¹	Loc ²		
0 - 5	10YR 3/2	100					Clay	
5 - 9	10YR 5/1	95	10YR 5/4	5	C	M	Clay	
9 - 17	10YR 6/1	90	10YR 5/8	10	C	M	Clay	
-								
-								
-								
-								

¹Type: C=Concentration, D=Depletion, RM=Reduced Matrix, MS=Masked Sand Grains. ²Location: PL=Pore Lining, M=Matrix.

Hydric Soil Indicators: <input type="checkbox"/> Histosol (A1) <input type="checkbox"/> Histic Epipedon (A2) <input type="checkbox"/> Black Histic (A3) <input type="checkbox"/> Hydrogen Sulfide (A4) <input type="checkbox"/> Stratified Layers (A5) <input type="checkbox"/> 2 cm Muck (A10) <input type="checkbox"/> Depleted Below Dark Surface (A11) <input type="checkbox"/> Thick Dark Surface (A12) <input type="checkbox"/> Sandy Mucky Mineral (S1) <input type="checkbox"/> 5 cm Mucky Peat or Peat (S3)	<input type="checkbox"/> Sandy Gleyed Matrix (S4) <input type="checkbox"/> Sandy Redox (S5) <input type="checkbox"/> Stripped Matrix (S6) <input type="checkbox"/> Loamy Mucky Mineral (F1) <input type="checkbox"/> Loamy Gleyed Matrix (F2) <input checked="" type="checkbox"/> Depleted Matrix (F3) <input type="checkbox"/> Redox Dark Surface (F6) <input type="checkbox"/> Depleted Dark Surface (F7) <input type="checkbox"/> Redox Depressions (F8)
---	---

Restrictive Layer (if observed): Type: _____ Depth (inches): _____	Indicators for Problematic Hydric Soils³: <input type="checkbox"/> Coast Prairie Redox (A16) <input type="checkbox"/> Dark Surface (S7) <input type="checkbox"/> Iron-Manganese Masses (F12) <input type="checkbox"/> Very Shallow Dark Surface (TF12) <input type="checkbox"/> Other (Explain in Remarks)
---	---

³Indicators of hydrophytic vegetation and wetland hydrology must be present, unless disturbed or problematic.

Hydric Soil Present? Yes No

Remarks:

HYDROLOGY

Wetland Hydrology Indicators:		
Primary Indicators (minimum of one is required: check all that apply)	Secondary Indicators (minimum of two required)	
<input type="checkbox"/> Surface Water (A1) <input type="checkbox"/> High Water Table (A2) <input type="checkbox"/> Saturation (A3) <input type="checkbox"/> Water Marks (B1) <input type="checkbox"/> Sediment Deposits (B2) <input type="checkbox"/> Drift Deposits (B3) <input type="checkbox"/> Algal Mat or Crust (B4) <input type="checkbox"/> Iron Deposits (B5) <input type="checkbox"/> Inundation Visible on Aerial Imagery (B7) <input type="checkbox"/> Sparsely Vegetated Concave Surface (B8)	<input type="checkbox"/> Water-Stained Leaves (B9) <input type="checkbox"/> Aquatic Fauna (B13) <input type="checkbox"/> True Aquatic Plants (B14) <input type="checkbox"/> Hydrogen Sulfide Odor (C1) <input type="checkbox"/> Oxidized Rhizospheres on Living Roots (C3) <input type="checkbox"/> Presence of Reduced Iron (C4) <input type="checkbox"/> Recent Iron Reduction in Tilled Soils (C6) <input type="checkbox"/> Thin Muck Surface (C7) <input type="checkbox"/> Gauge or Well Data (D9) <input type="checkbox"/> Other (Explain in Remarks)	<input type="checkbox"/> Surface Soil Cracks (B6) <input type="checkbox"/> Drainage Patterns (B10) <input type="checkbox"/> Dry-Season Water Table (C2) <input type="checkbox"/> Crayfish Burrows (C8) <input type="checkbox"/> Saturation Visible on Aerial Imagery (C9) <input type="checkbox"/> Stunted or Stressed Plants (D1) <input type="checkbox"/> Geomorphic Position (D2) <input type="checkbox"/> FAC-Neutral Test (D5)
Field Observations: Surface Water Present? Yes <input type="checkbox"/> No <input checked="" type="checkbox"/> Depth (inches): _____ Water Table Present? Yes <input type="checkbox"/> No <input checked="" type="checkbox"/> Depth (inches): _____ Saturation Present? Yes <input type="checkbox"/> No <input checked="" type="checkbox"/> Depth (inches): _____ (includes capillary fringe)		Wetland Hydrology Present? Yes <input type="checkbox"/> No <input checked="" type="checkbox"/>
Describe Recorded Data (stream gauge, monitoring well, aerial photos, previous inspections), if available:		
Remarks:		

Appendix 2 - PRELIMINARY JURISDICTIONAL DETERMINATION (PJD) FORM

BACKGROUND INFORMATION

A. REPORT COMPLETION DATE FOR PJD: 11/15/2024

B. NAME AND ADDRESS OF PERSON REQUESTING PJD:

Leigh Fehlman, Clark Dietz, Inc.
8900 Keystone Crossing, Suite 475
Indianapolis, IN 46240

C. DISTRICT OFFICE, FILE NAME, AND NUMBER:

D. PROJECT LOCATION(S) AND BACKGROUND INFORMATION:

(USE THE TABLE BELOW TO DOCUMENT MULTIPLE AQUATIC RESOURCES AND/OR AQUATIC RESOURCES AT DIFFERENT SITES)

The Indiana Department of Transportation (INDOT) proposes to proceed with an access control project consisting of drive re-grading and right-of-way fence installation in Crawfordsville, Montgomery County, Indiana (Des. No. 2300695). One drive, located adjacent to the east side of the W CR 300 N and US 231 intersection, will be resized. The immediate area encompassing the removed drive area will be re-graded. The existing drive pipe and ditch will remain in place during re-grading. Right-of-way fence will be installed along the east and west sides of US 231. INDOT tentatively plans to acquire the property parcel east of US 231; however, no work is anticipated to occur outside of the investigated area. In preparation for this project, a wetland and waterway delineation was conducted at the investigated area.

Land use within the investigated area is primarily roadway, mowed right-of-way, and unmaintained roadside ditches. Beyond the investigated area, land use is primarily agricultural and commercial properties.

State: Indiana County/parish/borough: Montgomery County City: Crawfordsville

Center coordinates of site (lat/long in degree decimal format):

Lat.: 40.084164 Long.: -86.904002

Universal Transverse Mercator: 16T 508184.29 4437103.08

Name of nearest waterbody: Black Creek

E. REVIEW PERFORMED FOR SITE EVALUATION (CHECK ALL THAT APPLY):

Office (Desk) Determination. Date:

Field Determination. Date(s):

TABLE OF AQUATIC RESOURCES IN REVIEW AREA WHICH "MAY BE" SUBJECT TO REGULATORY JURISDICTION.

Site number	Latitude (decimal degrees)	Longitude (decimal degrees)	Estimated amount of aquatic resource in review area (acreage and linear feet, if applicable)	Type of aquatic resource (i.e., wetland vs. non-wetland waters)	Geographic authority to which the aquatic resource "may be" subject (i.e., Section 404 or Section 10/404)
None	None	None	None	None	None


SUPPORTING DATA. Data reviewed for PJD (check all that apply)

Checked items should be included in subject file. Appropriately reference sources below where indicated for all checked items:

- Maps, plans, plots or plat submitted by or on behalf of the PJD requestor: Map: _____
Project location, USGS Topographic, NRCS Soils, NWI, IDNR Floodplain, NHD, Delineation mapping.
- Data sheets prepared/submitted by or on behalf of the PJD requestor.
 - Office concurs with data sheets/delineation report.
 - Office does not concur with data sheets/delineation report. Rationale: _____
- Data sheets prepared by the Corps: _____
- Corps navigable waters' study: _____
- U.S. Geological Survey Hydrologic Atlas: _____
 - USGS NHD data.
 - USGS 8 and 12 digit HUC maps.
- U.S. Geological Survey map(s). Cite scale & quad name: 1:24,000; Crawfordsville _____
- Natural Resources Conservation Service Soil Survey. Citation: SSURGO, Montgomery County _____
- National wetlands inventory map(s). Cite name: USFWS Wetland Mapper _____
- State/local wetland inventory map(s): _____
- FEMA/FIRM maps: IDNR INFIP _____
- 100-year Floodplain Elevation is: _____.(National Geodetic Vertical Datum of 1929)
- Photographs: Aerial (Name & Date): State of Indiana, Best Available _____
or Other (Name & Date): 08/07/2024 field investigation photos _____
- Previous determination(s). File no. and date of response letter: _____
- Other information (please specify): _____

IMPORTANT NOTE: The information recorded on this form has not necessarily been verified by the Corps and should not be relied upon for later jurisdictional determinations.

Signature and date of
Regulatory staff member
completing PJD

 11/15/2024

Signature and date of
person requesting PJD
(REQUIRED, unless obtaining
the signature is impracticable)¹

¹ Districts may establish timeframes for requestor to return signed PJD forms. If the requestor does not respond within the established time frame, the district may presume concurrence and no additional follow up is necessary prior to finalizing an action.

Categorical Exclusion
Appendix G
Public Involvement

(This section will be updated following completion of the public involvement process)